



COOLCULTUREFAIR

Intrepid Sea, Air & Space Museum
Monday, November 16, 2009
8:30 a.m. - 4:30 p.m.

10 Years of Bringing Cool Culture to NYC Families

COOL
CULTURE



“It is a great pleasure to welcome everyone attending the 8th Annual Cool Culture Fair. With hundreds of museums and exhibit spaces in our City, there could no better place to experience world-class arts and culture than New York—no matter your age! That’s why the City of New York is proud to join in celebrating this installment of Cool Culture. Visiting cultural institutions from a young age gives children the opportunity to explore and learn, encouraging verbal expression, vocabulary development, and critical thinking. Since its establishment, this organization has made it possible for thousands of low-income families to experience some of our City’s premier cultural institutions free of charge, and today’s event at the Intrepid Sea, Air & Space Museum is a wonderful example of its ongoing commitment to promoting arts access.”

Michael R. Bloomberg
Mayor

“Our City is alive with culture. From small, independent art galleries and off-Broadway theatre to large-scale museums that occupy an entire city block, nearly every corner of the city is brimming with cultural and artistic activity. Unfortunately, not everyone who lives here has had the opportunity to experience all the wonderful cultural diversity that our City has to offer. Thankfully, we have groups like Cool Culture . . . helping to make sure more young people and their families can enjoy these attractions, learn new things, and actively take part in the cultural life of our City.”

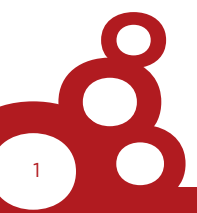
Christine C. Quinn
Speaker, New York City Council

“New York City is home to so many dynamic cultural organizations - from zoos to museums, from theaters to botanical gardens - that provide extraordinary artistic and educational experiences for audiences from near and far. Through the incredible work of Cool Culture, 50,000 New York City families from challenging economic backgrounds will have an opportunity to visit these institutions, free of charge, this year. Whether you visit the Museum of Art & Design in Columbus Circle or the New York City Transit Museum in Brooklyn Heights, there is something for everyone. Congratulations to the Cool Culture education partners...for their outstanding work in connecting so many New Yorkers with the institutions that play such an important role in enhancing our quality of life.”

Kate D. Levin
Commissioner, Department of Cultural Affairs

“I am delighted that through the partnership between Children’s Services and Cool Culture, the teachers at 425 Child Care and Head Start programs become cultural liaisons between their communities and New York’s cultural universe. These cultural “ambassadors” open up fascinating new worlds of art and nature to the city’s children and their families. In doing so, Cool Culture and early childhood programs staff provide opportunities that help each and every child to achieve his or her full educational and developmental potential, and to prepare children for transition and success in school.”

John B. Mattingly
Commissioner, Administration for Children’s Services



Cool Culture makes it possible for 50,000 underserved families to enjoy museums, botanical gardens and zoos with their children for free - in order to provide educational experiences for their children that will help them excel in school and life. Cool Culture partners with 90 cultural institution partners and works closely with over 425 Child Care, Head Start and Universal Pre-Kindergarten programs as well as Title I public schools to inspire families to embark on culturally enriching adventures.

Since our founding 10 years ago, Cool Culture has provided hundreds of thousands of low-income parents with opportunities to give their young children experiences that expand language and cognitive skills, and to instill a love of learning through the arts.

The commitment of New York City's world renown art museums, historical societies, botanical gardens, science centers and their staff to sharing their collections and resources with nontraditional audiences makes our work possible. The hard work and dedication of hundreds of education professionals who have deep roots in their communities, and long-standing relationships with the children and parents they serve, has made us successful.

On behalf of the 50,000 families Cool Culture serves, and the many Cool Culture alumni whose horizons were transformed by their cultural adventures, we thank you!

For more information about Cool Culture go to www.coolculture.org.

ACKNOWLEDGEMENTS

Cool Culture is deeply grateful to the Intrepid Sea, Air & Space Museum for generously hosting this year's Fair. Special thanks to Susan Marenoff, Elizabeth O'Connell, Sheri J. Levinsky Raskin, Desiree Scialpi, Bill White and the entire Museum staff for their unfailing support throughout this project.

Cool Culture Fair would not have been possible without the panelists, breakout session presenters, cultural institution representatives, Cool Culture interns, volunteers and supporters who generously donated their ideas, resources and time to make the event a success. A special thanks to Martha Cameron, Yvonne Fox, Marsha Green and Victoria Watson for their help organizing the 10th Anniversary Luncheon.

A big Cool Culture thank you to Y INTERACT for designing the Cool Culture Fair 2009 program brochure.



8:30 - 9:30 a.m.

Registration

9:00 - 10:45 a.m.

Cool Culture Fair Tables Open

11:00 - 12:45 p.m.

Squadron 1 - Orientation & Lunch

Squadron 2 - Lunch & Orientation

1:00 - 2:15 p.m.

Part 1 - Concurrent Sessions

- Bringing Science Concepts to Children & Families
- Light as a Feather or Stiff as a Board? Learning with Clay and Paper-Mache!
- Mining Cultural Treasures: Using Cultural Gems to Inspire a Love of Learning
- Science on the Move: A Walking Tour Through the Intrepid

2:30 - 3:45 p.m.

Part 2 - Concurrent Sessions

- Art 360° Turning a Green Art Activity into Multidisciplinary Learning Experiences
- Drawing on Family Memories to Strengthen Our Family Involvement Practice
- Light as a Feather or Stiff as a Board? Learning with Clay and Paper-Mache!
- Making Museum Connections: Creating Online Family Resources
- Using Art to Develop Critical Thinking and Emergent Literacy Skills
- Science on the Move: A Walking Tour Through the Intrepid

4:00 - 4:30 p.m.

Cool Culture Q & A Session

ORIENTATION

Squadron 1 11:00 – 11:45 a.m.
Squadron 2 12:00 – 12:45 p.m.

Back to Cool:

Best Practices for a Vibrant Cool Culture Program

Allison & Howard Lutnik Theater

Cool Culture will welcome early education partners to the 2009 – 2010 program year, provide an overview of resources on Cool Culture's newly redesigned website, and a brief program overview. A panel of directors, teachers, family service workers and Cultural Liaisons will discuss strategies they use to inspire parents to make cultural visits with their children, how they address challenges commonly experienced when working to build parent involvement, and will include a brief Q & A at the close of the session.

Panelists: Cool Culture (Moderator); Malikka Karteron, Assistant Education Director, B'Above Head Start; James Montalvo, Parent Involvement Coordinator, Marble Hill Nursery School; Lawrence Provette, Director, Stagg Street Center for Children; and Karen Worchel, Executive Director, Marble Hill Nursery School.

Participants: This session will accommodate 400 participants.

PART 1 – CONCURRENT SESSIONS

1:00 – 2:15 p.m.

Bringing Science Concepts to Children & Families

Great Hall

Working in small groups, participants will experiment with simple science lessons and concepts that can be introduced to children 3, 4 and 5 years of age. Participants will then come together to discuss the science concepts introduced by each lesson. Educators will leave the session with write-ups of the lessons and strategies for integrating the activities into the classroom and parent workshops at their program.

Panelists: Sheri J. Levinsky Raskin, Assistant Vice President, Education, Intrepid Sea, Air & Space Museum (Moderator); Adrienne Aragon, Program and Events Coordinator, Sony Wonder Technology Lab; Margaret Murray, Museum Educator, Intrepid Sea, Air & Space Museum; Ashley Gamell, Discovery Garden Coordinator, Brooklyn Botanic Garden; Alison Saltz, Theater Outreach Coordinator, Central Park Zoo; Bricken Sparacino, Education Instructor, Central Park Zoo; Alice Stevenson, Senior Manager of Family Programs and Preschool Learning, New York Hall of Science; Nina Wetzell, Educator, American Museum of Natural History and Daniel Zeiger, Discovery Room Program Manager, American Museum of Natural History.

Participants: This session will accommodate 120 participants.

Light as a Feather or Stiff as a Board? Learning with Clay and Paper-Mache!

Education Classroom

In this hands-on art workshop participants will explore the use of clay and paper-mache as media that allow children to create and explore three-dimensional objects while enhancing their fine motor skills. Workshop participants will sculpt in clay, use Paper-Mache to cast an object, and discuss simple science, math and art concepts that can be used to support children's critical thinking and emergent literacy.

Presenter: Rachel Miller, Artist Educator

Participants: This workshop will accommodate 35 participants.

Mining Cultural Treasures: Using Cultural Gems to Inspire a Love of Learning

Allison & Howard Lutnik Theater

The rich collections of art museums, historical societies and nature centers are wonderful resources that education professionals can tap into to foster critical thinking, curiosity, creativity and vocabulary in young children. Participants will explore where to begin – which resources can be brought into the classroom, and how to then get parents interested in trying out easy activities they can do in minutes both with their children at home and in the museum context.

Panelists: Hope Jensen Leichter, Professor, Teachers College, Columbia University (Moderator); Josefina Myriam Bedolla, Executive Director, Goddard Riverside Head Start; Jane Rohan Kloecker, Director of the Science and Nature Program and Family Initiatives, American Museum of Natural History; Elissa Blount Moorhead, Director of Programming and Exhibitions, Weeksville Heritage Center; Keats Myer, Executive Director, Children's Museum of the Arts; and Catherine Tamis-Lemonda, Professor of Applied Psychology, NYU Steinhardt School of Culture, Education, and Human Development.

Participants: This session will accommodate 230 participants.

Science on the Move: A Walking Tour Through the Intrepid

Hangar 3 (near the globe)

Join a tour through the ship and learn about the fascinating role science plays in the function and design of the aircraft carrier. With a focus on flight, water and space, the science concepts that influenced the Intrepid's design and structure will be examined in a simple style that educators can use to engage children ages 1 to 8!

Presenter: Patrick Gormley, Museum Educator, Intrepid Sea, Air & Space Museum

Participants: This session will accommodate 30 participants.

PART 2 – CONCURRENT SESSIONS

2:30 – 3:45 p.m.

Art 360° Turning a Green Art Activity into Multidisciplinary Learning Experiences

Discovery Deck

This hands-on workshop will introduce tactile, observational and kinesthetic activities education professionals can use to engage young children in the study of architecture. Participants will explore the architectural concepts of structure, utility and beauty; use found and recycled materials to build their own structures, and learn how to create activities for children and parents that support multidisciplinary and multimodal learning experiences.

Presenter: Kevin Blum, Visitor Services Administrator and Kinneret Kohn, Education Specialist, The Cathedral Church of Saint John the Divine

Participants: This workshop will accommodate 35 participants.

Drawing On Family Memories to Strengthen Our Family Involvement Practice

Rotunda

This reflective workshop will examine how education professionals can tap into their own family histories to fine-tune their work with families and establish supportive relationships with parents that build on families' strengths, promote trust and increase levels of engagement. An exploration of the family, "school," and the museum as educators will highlight the vital role these forces can play in children's development.

Presenter: Hope Jensen Leichter, Professor, Teachers College, Columbia University

Participants: This session will accommodate 30 participants

Light as a Feather or Stiff as a Board? Learning with Clay and Paper-Mache!

Education Classroom

In this hands-on art workshop participants will explore the use of clay and paper-mache as media that allow children to create and explore three dimensional objects while enhancing their fine motor skills. Workshop participants will sculpt in clay, use Paper-Mache to cast an object, and discuss simple science, math and art concepts that can be used to support children's critical thinking and emergent literacy.

Presenter: Rachel Miller, Artist Educator

Participants: This workshop will accommodate 35 participants.

Making Museum Connections: Creating Online Family Resources

Hangar 2 (near the Kamikaze Installation)

Workshop participants will collaboratively author a family-friendly activity that will be published on Cool Culture's new website! Participants will contribute their voice, creativity and experience with children and parents in their communities to help create a simple activity for families which Cool Culture parents will be able to download off the web and enjoy with their children.

Presenter: Gerrie Bay Hall, Museum Educator, Intrepid Sea, Air & Space Museum

Participants: This session will accommodate 30 participants.

Using Art to Develop Critical Thinking and Emergent Literacy Skills

Great Hall

This session will introduce visual inquiry as an educational approach that can be used to engage young children in discussions about art. Working in small groups, participants will take part in an "art looking" exercise simple enough to be used in the early childhood classroom and in parent workshops. Educators will leave the session with simple write ups of each lesson and strategies that will leave them prepared to use the techniques at their programs.

Panelists: Allison Day, Youth and Family Programs Manager, Brooklyn Museum (Moderator); Shirley Brown Alleyne, Director of Education, Wyckoff Farmhouse Museum; Miriam Bader, Director of Education, Museum at Eldridge Street; Carmen Hernandez, Coordinator of Education Programs, the Bronx Museum of the Arts; Chris Bamonte, Manager of School and After School Programs, Jamaica Center for Arts & Learning; Jennifer Kalter, Manager, School & Family Programs, American Folk Art Museum; and Kristin Scarola, Family Programs Coordinator, Brooklyn Museum.

Participants: This session will accommodate 120 participants.

Science on the Move: A Walking Tour Through the Intrepid

Hangar 3 (near the globe)

Join a tour through the ship and learn about the fascinating role science plays in the function and design of the aircraft carrier. With a focus on flight, water and space, the science concepts that influenced the Intrepid's design and structure will be examined in a simple style that educators can use to engage children ages 1 to 8!

Presenters: Patrick Gormley, Museum Educator, Intrepid Sea, Air & Space Museum

Participants: This session will accommodate 30 participants.

COOL CULTURE Q & A SESSION

4:00 – 4:30 p.m.

Q & A Session

Allison & Howard Lutnik Theater

Cool Culture staff will be on hand to answer questions about the program – including specific questions education partners may have about their Child Care, Head Start, Universal Pre-Kindergarten or Title I Public School.



Monica Abend is Program Director at Cool Culture, and comes to the organization from the Wyckoff Farmhouse Museum, where she developed the Museum's first public programs calendar and arts education school program. Prior to that, Monica served as the Museum Education Program Director at the Grumblethorpe Museum in Philadelphia, PA, worked in museum education at PS 1 Contemporary Art Center and The Museum of Modern Art in New York City. Monica received her BFA from University of the Arts and her MPA from New York University's Robert F. Wagner Graduate School of Public Service. She exhibits her visual art and performance works on a local and international stage.



Shirley Brown Alleyne is Director of Education at the Wyckoff Farmhouse Museum, and an adjunct professor at the Fashion Institute of Technology. Prior to joining the Museum, she taught education classes at Medgar Evers College, served as a special museum educator for the Black Style Now! exhibition at the Museum of the City of New York, and taught NYC history at a variety of cultural institutions around the city as well as middle and high school. She received her BA in secondary education with a concentration in social studies from Niagara University and her MSEd at Bank Street College.



Candice Anderson is Executive Director of Cool Culture. Previously, Candice served as Director of Child Care and Head Start Collaboration at the NYC Children's Services where she worked to coordinate effective use of resources and strengthen program services. Prior to that she served as Senior Policy Associate for Child Care, Education and Youth Development at Citizens' Committee for Children of New York where she conducted research and advocated on behalf of children and families. Candice also worked at the Child Care Action Campaign, received her MS in Urban Policy from the New School for Social Research, and BA from Oberlin College.



Adrienne Aragon is Program and Events Coordinator at Sony Wonder Technology Lab. She has developed and taught workshops for hundreds of preschool children, covering topics from electronic recycling to light painting with digital cameras. Adrienne has been an educator for over eight years and previously chaired Camp Sparky, a nonprofit organization in Phoenix, Arizona that creates and implements hands-on activities for inner city 5th graders to inspire them to love learning and aim for college. She is currently working on her MA in educational communication and technology at New York University.



Miriam Bader is Director of Education at the Museum at Eldridge Street, where she oversees programming for the museum's growing school and family audiences. Prior to joining the Museum at Eldridge Street, Miriam worked at the Solomon R. Guggenheim Museum, the Lower East Side Tenement Museum, the Jewish Museum, and as an elementary school teacher. Miriam received her BA in history at Yeshiva University, a MS in museum education from Bank Street College, teacher certification from the New York State Board of Education and studied at the Institute in Jewish Art at the Jewish Theological Seminary.

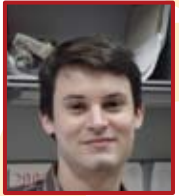
Chris Bamonte is Manager of School and After-School Programs for the Jamaica Center for Arts and Learning (JCAL). JCAL provides arts education to New York City public schools at its center in downtown Jamaica and through its ARTventure programming. From 2003 - 2005 Chris was the Director of the French Woods Festival for the Performing Arts Theatre Program, one of the largest performing arts camps for children. During his tenure he worked with Jason Robert Brown and the French Woods staff on workshops for the performances Parade and Thirteen the Musical.



Josefina Myriam Bedolla is Executive Director of Goddard Riverside Head Start and became interested in the arts while studying at the Escuela de Artes Aplicadas. Originally from Santiago, Chile, she emigrated to NYC in 1963, became a commercial textile artist, and began work at the newly-formed national Head Start program. Myriam has exhibited in solo and group shows in Chile, Venezuela, New York, California, and France, and was represented as an enamellist by Metarco Galleries. She has a MA in bilingual education, and has been involved in early childhood education for many years. Myriam has worked with Head Start for over 40 years and is proud to be involved in many wonderful partnerships including a collaboration with the American Museum of Natural History.



Kevin Blum is Visitor Services Administrator at The Cathedral Church of Saint John the Divine where he educates students and develops the Cathedral's environmental education program. Previously, John taught underserved students in Boston and New York City public schools and after-school programs. He also created and taught environmental science programs for the New York City Department of Parks and Recreation, and in 2007 received the Department's Environmental Educator Award. John received his BA from Macalester College and attends The City College of New York.



Lindsay Booker is Communications Assistant at Cool Culture. Prior to that she worked in the Children's Library at Fayetteville Public Library in Arkansas where she led activities centered around reading to young men with Youthbridge, a provider of care to troubled teens. Lindsay graduated from Princeton University, where she earned a BA in sociology with a certificate in African-American Studies. Her coursework focused on early education and the potential causes of the achievement gap.



Allison Day is Youth and Family Programs Manager at the Brooklyn Museum, where she and her colleagues coordinate programs serving approximately 9,000 youth and families annually. Allison is dedicated to providing opportunities for others to make personal connections to art. Prior to her arrival at the Brooklyn Museum in 1996, she worked for the Art Institute of Chicago and the Philadelphia Museum of Art. She holds a BA in art history from Yale University and an MA in art history from the University of North Carolina at Chapel Hill.



Mayrav Fisher has served as Education Manager for School and Family Programs at the Solomon R. Guggenheim Museum since January 2006. She oversees all family programs, school programs, training of museum educators, and professional development of classroom teachers and administrators at the Guggenheim. Previously, Mayrav worked at the Whitney Museum of Art, the Hudson River Museum and the Cooper-Hewitt National Design Museum. Mayrav holds a MS in Education from the Bank Street College of Education and a BA in art history from Hunter College of the City University of New York.





Ashley Gamell coordinates the Discovery Garden at Brooklyn Botanic Garden, a children's garden that provides hands-on exploration of the natural world and free workshops for visiting families. Ashley has researched sea grasses in Mexico, orcas in Canada, and walrus at the New York Aquarium. In recent years, she has enjoyed teaching in Brooklyn Botanic Garden's Science Adventures and City Farmer programs and coordinating their historic Children's Garden. A published poet, Ashley is inspired by plants and people. Ashley holds a BA in Environmental Studies from Middlebury College and is working on a certificate in horticulture.



Patrick Gormley is an educator at the Intrepid Sea, Air & Space Museum where his focus includes after-school, community and student programming. Prior to that, he taught in Buffalo, New York. Patrick got his first taste of cultural education as a tour guide at Niagara Falls State Park during his undergraduate years, when he earned an MS in Secondary Education from Niagara University.



Gerrie Bay Hall is Coordinator of School Programs at the Intrepid Sea, Air & Space Museum. Gerrie has designed and conducted school and family programs at some of the finest museums in the New York City area including the Morgan Library and Museum, the New-York Historical Society, and The Metropolitan Museum of Art. In addition to teaching responsibilities at the Intrepid, Gerrie is involved in developing and implementing student and teacher programming. She earned her MA in Museum Studies from New York University and her BA in History and French at University of Oregon.



Carmen J. Hernandez is Coordinator of Education Programs at the Bronx Museum of the Arts. Carmen has organized solo exhibitions including Niagara on Bicycle and Miseducation. Most recently she participated in the group exhibition Refashioning Moda at Fashion Moda gallery in the Bronx. Previously, Carmen was the Art Director for the Pelham Country Club, Arts Curriculum Specialist for Ballet Hispanico, Art Therapist for the Abraham House and Intergenerational Curriculum Specialist for the Pelham Park NORC. In July 2008, she was featured in Time Out New York magazine. Carmen has a BFA from the College of New Rochelle and a MAT from at the School of Visual Arts.



Jennifer Kalter is Manager of School and Family Programs at the American Folk Art Museum and has worked in museum education for nine years. In addition to working with school and family audiences, Jennifer implemented a program for individuals with Alzheimer's and co-curated the exhibition Perspectives: Setting the Scene in American Folk Art, now on view. She also teaches family programs at The Metropolitan Museum of Art and The Cloisters. Jennifer holds a BA in art history from the University of Michigan, has done graduate work in education, and is finishing her MA in art history at Hunter College.



Malikka Karteron is the agency-wide Assistant Director of Education for B'Above Worldwide Head Start. Previously, Malikka investigated environmental issues as a graduate fellow for the Center for Environmental Analysis-Center for Research Excellence in Science & Technology (CEA-CREST), a multidisciplinary center at California State University, Los Angeles. She also worked as a research assistant for the NYC Department of Environmental Protection where she researched and analyzed ongoing legal cases, resulting in policy changes and implementation of a refertilization plan for polluted areas. Malikka now applies her scientific and analytical skills to education and the empowerment of low-income families.

Jane Rohan Kloecker is Director of the Science and Nature Program and Family Initiatives at the American Museum of Natural History (AMNH). Jane founded the Museum's Science and Nature Program for young children, now in its 12th year. Through the program, families actively investigate science and the natural world and explore the Museum. Prior to joining AMNH, Jane served as Head of the Calhoun Lower School, consultant to the New York City Department of Education, and coordinator for the Sino-American Pediatric Exchange. She has been instrumental in developing early learning programs in schools throughout New York City.



Kinneret Kohn is Education Specialist at The Cathedral Church of Saint John the Divine, where she oversees family programming development and facilitation. Previously, she worked for several leading international peace education organizations including the Seeds of Peace Jerusalem Center, Hand in Hand: Center for Jewish Arab Education, the Tanenbaum Center for Interreligious Understanding, and the OneVoice Movement. Kinneret holds an MA in International Education Development from Teachers College, Columbia University and a BA in International Studies from Ohio State University.



Randi Korn is Founding Director of Randi Korn & Associates, Inc. (RK&A), a museum planning and evaluation consulting firm dedicated to guiding museums toward improved practices and maximum impact. During the company's 20-year history, RK&A has learned from over 600 evaluation projects. RK&A staff strive to help museums link planning with evaluation, and promote using data to ask "What have we learned?" and "How can we do better?" She shares her intentional practice philosophy through articles and lectures at The George Washington University, where she taught for 18 years.



Hope Jensen Leichter is Elbenwood Professor of Education at Teachers College, Columbia University and Director of the Elbenwood Center for the Study of Family as Educator, a center dedicated to improving education through discovering the creative intelligence in all families. She teaches courses on the family as educator, focusing on family memories and community education through museums. She has written on topics including families and communities as educators, listening to and learning from families, and stories as forms of learning in museums. She received the Guggenheim Fellowship for the study of family memories and holds a PhD from Harvard University.



Edwina Meyers is Co-Founder and Board Co-Chair of Cool Culture. She is the former Deputy Commissioner of the NYC Human Resources Administration's Agency for Child Development. Pursuant to this tenure, Edwina served as Executive Special Assistant to the Assistant Deputy Commissioner of NYC Children's Services Head Start and currently serves as the Director of External Relations within the Division of Child Care and Head Start. Prior to work in city government, Edwina was an Adjunct Professor of Child Development and Early Childhood Education and an Associate Research Scientist at New York University's School of Education. She continues her consulting work in both the business and non-profit sectors.





Rachel Miller is an artist and educator rooted in New York City. Rachel has designed sets, costumes, and textiles independently and for films, theatre, and dance. Her work is exhibited nationally and is included in public and private collections. She has appeared in Interior Design magazine, the Bangaluru Pages, and the Tribunale di Firenze. Rachel teaches and lectures at the Museum of Arts and Design, the Cooper-Hewitt National Design Museum in New York City, and the University of the Arts in Philadelphia. Rachel received her MFA from the Cranbrook Academy of Art and her BFA from the University of the Arts.



James Montalvo has served as the Cool Culture Cultural Liaison for Marble Hill Nursery School since 2000. James' association with Marble Hill started in 1989 when his first daughter attended Marble Hill and he became a board member. He served at Marble Hill as recording secretary, alumni parent, treasurer and president, and since 1993 has remained on the board as an ex-officio. As a Cultural Liaison, James encourages families to use the wealth of opportunity offered by Cool Culture; and he finds this very rewarding.



Elissa Blount Moorhead is Director of Programming and Exhibitions at Weeksville Heritage Center as well as a designer, curator, and lecturer. She is the principal of EstherGrace Designs, a full service environmental and exhibition design company which also provides eco-education to students. Elissa is a professor at Pratt's Graduate School of Art and Cultural Management and Co-Founder of Red Clay Arts in NYC where she served as Executive Director for five years. In addition, Elissa served as Director of RushKids, an arts education program administered by Rush Arts Gallery, as well as a teacher and advisor at the Duke Ellington School of the Arts in Washington, DC. A former attorney at MTV, Sesame Street and Nickelodeon, she attended Parsons School of Design where she focused on urban and sustainable design issues.



Margaret Murray is an educator at the Intrepid Sea, Air & Space Museum. Margaret graduated from Binghamton University with a degree in Political Science. After college she joined Teach For America, a national teaching program which places recent college graduates as teachers in under-resourced schools throughout the United States. Margaret taught second, fourth and fifth grades during her tenure at PS 92 in Central Harlem. Margaret has a MA from Bank Street College in Early Childhood and Elementary Education.



Keats Myer is Executive Director of the Children's Museum of the Arts. Since joining the Museum in 2004, Keats has led CMA through a period of rapid expansion. She received her MPA from the Robert F. Wagner Graduate School of Public Service at NYU and has worked for a range of corporate and non-profit institutions. After four years in marketing at AT&T, she joined the world of museums in 2000 when she oversaw the strategic planning, fundraising, design and construction of The National Track & Field Hall of Fame Museum in Upper Manhattan. Keats is the proud mother of three.



Lawrence Provette is Director of the Stagg Street Center for Children and the Bushwick Improvement Society, Inc. He has served as Vice President of the Professional Association of Day Care Directors of New York City, President of Louisville C.A. Inc., a Board Member for Hathaway and Clark F.H. Inc., Founding and Host Committee Member of the Black Alumni of Pratt, and a member of the Pratt Legends Hall of Fame, Brooklyn Arts Council, and the National Association for the Education of Young Children. Larry also sits on the Board of Directors of Cool Culture. He holds a BS in Architecture from the Pratt Institute and an MSEd from the City College of New York.

Sheri Levinsky Raskin is Assistant Vice President of Education at the Intrepid Sea, Air & Space Museum, where she oversees the education team and its science, history and leadership programs. Sheri has over 10 years of experience in education. She was the Director of Education and Programs at the Decatur House Museum in Washington DC, has taught kindergarten, and worked at WorldWays Children's Museum, The Saint Louis Art Museum and The Art Institute of Chicago. Sheri holds a MAT in Museum Education from George Washington University, a BA in Cultural Anthropology from Washington University, and a Certificate of Specialization in Historic Preservation from Goucher College.



Abby Remer is an education consultant who has worked with cultural institutions including museums, libraries, botanical gardens, and historical societies for over 27 years. For the last decade she has also worked in youth development, helping teenagers gain educational experience in career exploration and development. She has contributed to textbooks in many subject areas and published books including Discovering Native American Art and Enduring Visions: Women's Artistic Heritage Around the World. Abby provides services including qualitative program evaluation, program planning, curriculum writing, and professional development. She has worked with adults, families, teachers, students and other professionals.



Charles Rosa is Director of Highbridge Nursery School in the Bronx. He has worked as an educator in service to the community for 35 years. Previously, Charles taught parenting skills at City College in the Skills and Language Development Department. Charles holds a MS and a BS in early childhood education from City College School of Education of City University of New York and an AS in Social Work from Adelphi University. He was awarded an Outstanding Service Award by the New York City Department of Personnel in 1995.



Alison Saltz is the Theater Outreach Coordinator at the Central Park Zoo. She manages and coordinates the Zoo's Outreach Education Program which travels around the tri-state area getting kids excited about wildlife and wild places. The program stages more than 300 performances a year for schools, libraries and community groups in both classroom and auditorium settings. Previously, Alison performed at the Zoo's Wildlife Theater and entertained visitors from all over the world.



Kristin Scarola is Family Programs Coordinator at the Brooklyn Museum, where she teaches children and adults of all ages. Through her practices as an educator, artist, and academic, Kristin employs improvisation as a means toward social change. Prior to working at the Brooklyn Museum, Kristin spent several years teaching in public and Montessori schools, was an educator at the Newark Museum, and worked as a freelance teaching artist. Kristin is a practicing visual artist, holds a BA in Jazz Performance and Ethnomusicology, and is completing her in Improvisation at New York University.



Shanta Scott is School and Family Programs Coordinator at the Studio Museum in Harlem. She facilitates partnerships with over 15 schools throughout New York City each year and works to broaden arts education across school curricula. Shanta also coordinates visual arts based programs for families with young children, trains museum educators, and organizes professional development opportunities for classroom teachers and parents. She has initiated programming for special audiences at the Studio Museum such as workshops and verbal description tours. She is currently assisting in the development of interpretative materials to build bridges between the Museum and non-traditional art-going communities.





Bricken Sparacino has been an educator and performer with the Wildlife Conservation Society since 2005, and currently works at both the Bronx Zoo and the Central Park Zoo through her work with the Wildlife Theater program. As part of Wildlife Theater, Bricken has performed educational theatrical programs in all five boroughs and around the tri-state area. She also works with pre-kindergarten to 8th grade students and teachers and enjoys bringing the wonder of the animal kingdom to urban students. Bricken is originally from California and graduated from Santa Clara University.



Alice Stevenson is the Senior Manager of Family Programs and Preschool Learning at the New York Hall of Science. She develops and implements family and preschool programs and exhibits. Her department's mission is to empower families to develop inquiry skills for the exploration of everyday phenomena. Previously she was the Coordinator of Family Programs at the Brooklyn Museum, where she developed and taught art education programs for preschoolers.



Catherine S. Tamis-Lemonda is Professor of Applied Psychology at New York University's Steinhardt School of Culture, Education and Human Development. She is Director of the Center for Research on Culture, Development, and Education, where she is overseeing a study on the developmental trajectories of children, ages 0-6, from Mexican, Dominican, Chinese, and African American backgrounds. Catherine has been the Primary Investigator at the NYC Early Head Start National Evaluation Study. Her expertise is in the areas of parent-child language interactions, children's developments in cognition, language, literacy, and motor action; and the study of cultural views and practices across ethnic and immigrant groups in the United States. Catherine has published approximately 100 peer reviewed publications, and co-edited the Handbook of Contemporary Issues Child Psychology; Handbook of Father Involvement, and The Development of Social Cognition and Communication.



Julie Wennekes is an early care and education specialist, social worker and Head Start program administrator. She recently served 2 years as a national Head Start Fellow in the Educational Development and Partnerships Division at the Office of Head Start in Washington, D.C. During her Fellowship, A Head Start on Picturing America was among her favorite projects. Prior to her Fellowship she worked as the Disabilities and Mental Health Supervisor for a large Head Start grantee in central California. Julie's advocacy has included serving as an Early Interventionist, Family Services Worker, Guardian ad Litem, Mediator and Adoption Caseworker.



Nina Wetzell is an educator in the Science and Nature Program at the American Museum of Natural History (AMNH) where she assists with teaching early childhood classes and is responsible for the care and maintenance of the program's extensive live animal collection and assists with teaching early childhood classes. Nina regularly presents at professional development events and conferences on the topic of animal habitat building techniques. Before coming to AMNH, Nina served as a zookeeper and lecturer at Clyde Peeling's Reptiland in Allenwood, PA. She traveled with the exhibition, Frogs: A Chorus of Color to Chicago's Museum of Science and Industry as well as AMNH.

Cathleen Wiggins is Director of the Leadership in the Arts Program at Bank Street College of Education, a collaborative degree program with Parsons New School of Design and Sarah Lawrence College. A former public school teacher and theater artist, Cathleen is also a member of the Museum Education faculty at Bank Street College. She is passionate about museum education, the arts, and improving the educational opportunities of all children. Cathleen is married to Ernest Wiggins, who is a professor of theater at Kean University in New Jersey, and mother of Camille, a student at Bank Street's School for Children.



Ayesha Wiltshire is Assistant Director of Education and Public Programs at the Studio Museum in Harlem. Prior to working at the Studio Museum, Ayesha worked at the Westchester Arts Council. She has organized numerous program and education initiatives and in the year 2000, was one of eight professionals selected to be an International Foundation for Education and Self-Help fellow from 2000-2001. From 2005 - 2008, Ayesha served as a council member of the Arts in Education Council of Americans for the Arts. In addition to her work at the Studio Museum in Harlem, she is an arts management and program evaluation consultant and holds a BS in Entrepreneurship and a MA in Public Administration.



Karen Worchel has been the Director of Marble Hill Nursery School, a parent cooperative founded in 1953, for over 20 years. A former public school kindergarten teacher, Karen came to Marble Hill as a parent in 1972 and served on the Board of Directors before becoming Administrative Director in 1977. Karen attributes her long tenure at Marble Hill to the highly skilled staff, dedicated parents and wonderful children she works with every day.



Daniel Zeiger is Manager of the Discovery Room at the American Museum of Natural History (AMNH). He uses his background in biology and environmental science to encourage visitors of all ages to develop an understanding of science. By providing hands-on interactions with museum specimens, scientific equipment and live animals, the Discovery Room makes science accessible and allows visitors to explore the natural world in an inviting setting. Before coming to AMNH, Daniel worked as both a zookeeper and educator for the Philadelphia Zoo and Wildlife Conservation Society.



Li Zhou is Program Assistant at Cool Culture. Previously she worked for the International Campaign to Ban Landmines in Geneva, Switzerland, and Directions for Our Youth, a youth-organizing group in New York City. Li is a graduate of Colgate University, where she received a BA in Political Science and Peace and Conflict Studies.



Calder Zwicky is Community Outreach Consultant for the Museum of Modern Art and one of two educators charged with running the Bronx Museum of the Arts' Teen Council. Calder is also the Artistic Director of Teatro Circoscuro, a Bronx-based bilingual theater company. He has studied Boalian theater techniques with Augusto Boal's Centro de Teatro do Oprimido in Brazil, mask-making techniques with Teatro Yerbabruja in Puerto Rico, and worked for a variety of arts organizations in New York including the Queens Museum of Art, the Lehman College Fine Arts Gallery, and the Studio Museum in Harlem.



PARTICIPATING EARLY EDUCATION PROGRAMS

1199 Future of America Learning Center • ABC Cassidy's Place • ABC Echo Park • Adam Clayton Powell, Jr. Head Start • Addie Mae Collins Head Start I • Addie Mae Collins Head Start II • AF Bushwick Charter School • Afro American Parents Education Center III • Aim High Day Care Center • All Children's Childcare - Long Island City • All Childrens Childcare II- Astoria • All My Children Day Care & Nursery School I • All My Children Day Care & Nursery School II • Alonzo A. Daughtry Memorial Day Care Center II • Alpha Kappa Alpha Day Care Center • Amalgamated Nursery School • AMICO Court Street Children's Center • Amistad Early Childhood Education Center • Annie G. Newsome Head Start I • Annie G. Newsome Head Start II • Annunciation Little Angels Head Start • As the Twig is Bent Children's Center • Audrey Johnson Day Care Learning Center • B'Above Headstart - Central Base • Bais Sarah School • Bank Street Head Start • Bank Street West Head Start • Baruch College Early Learning Center • BBCS Duffield Children's Center • Bedford Avenue Family Day Care • Bedford Harrison Day Care Center • Bedford Village Garden Day School • Bedford-Stuyvesant Head Start - Decatur Center • Bedford-Stuyvesant Head Start - DeKalb Center • Bedford-Stuyvesant Head Start - Garvey Center • Bedford-Stuyvesant Head Start - Jefferson Center • Bedford-Stuyvesant Head Start - Kings First Center • Bedford-Stuyvesant Head Start - Lexington Center • Bedford-Stuyvesant Head Start - MacDonough Center • Bedford-Stuyvesant Head Start - Quincy Center I • Bedford-Stuyvesant Head Start - Quincy Center II • Bedford-Stuyvesant Head Start - Stuyvesant Center • Beis Chaya Mushka • Bellvue Educare Child Care Center • Betances Early Childhood Development Center • Beth Jacob Day Care Center • Beth Rivkah Head Start • Bethel Day Care Center • Bethel Mission Loving Day Care Center • Bev's Kiddie Daycare, Inc. • Billy Martin Child Development Center • Bishop Sexton Head Start • Blondell G. Joyner Day Care Center • Bloomingdale Family Program • Bloomingdale Project Growth Head Start • Bloomingdale Project Hope Head Start • BOLD NY • Boulevard Nursery School • Boys & Girls Harbor Preschool • Breukelen Recreation Rooms Day Care Center • Breukelen Recreation Rooms Head Start • Brevoort Children's Center • Bridge Street Child Development Center • Bright Beginnings - 58th Street • Bright Beginnings Jamaica Preschool • Bright Smile Center • Bronx Academy of Promise • Brooklyn Child & Family Services - Project CHANCE • Brooklyn Chinese-American Association Early Childhood Center • Brooklyn College Early Childhood Center • Brownstone School Day Care Center • Bushwick Bright Start Program • Bushwick United Head Start I • Bushwick United Head Start III • Bushwick United Head Start V • Bushwick United Head Start--Leonard Street • Cardinal Spellman Head Start • CAS Bronx Early Childhood Center • CAS Drew Hamilton Learning Center • CAS Dunley Milbank Day Care • CAS East Harlem Head Start • CAS Frederick Douglass Head Start • CAS PS 5 Early Head Start • CAS PS 5 Extended Day • CAS PS 5 Head Start • CAS PS 8 Early Head Start • CAS PS 8 Head Start • CAS Taft Day Care Center • CDSC Head Start • CECD Head Start • Center for Preschool and Family Learning • Center for Preschool and Family Learning II • Challenge Early Intervention Center • Charles R. Drew Early Learning Center • Child Center of NY • Child Center of NY - Woodside • Child Center of NY Early Head Start • Child Center of NY- Sonia Strumps & Trude Weishaupt Clinics • Children's Corner Day Care Center • Chinatown Head Start • Christ Church United Methodist Head Start • Citizens Advice Bureau Homebase • Citizens Care Day Care Center I • City College Child Development Center • CLC Head Start - Mount Morris • CLC Head Start - Taino Towers • Coalition for Human Housing Day Care Center • Colin-Newell Head Start • Columbia University Early Head Start • Columbia University Hamilton Early Head Start • Columbia University Head Start • Community & Family Head Start • Community & Parents Day Care Center • Community Parents Head Start • Community Partnership Charter School • Concerned Parents of Jamaica Day Care Center • Concourse Day Care Center • Concourse Even Start • Concourse House Day Care • Conexiones Entre Familias Family Day Care • Coney Island Child Care Center • Congregation Machna Shalva I • Congregation Machna Shalva II • Cooper Park Child Care Center • CPC Chung Pak Day Care Center • CPC Garment Industry Day Care Center • CPC Jacob Riis Child Care Center • CPC Little Star of Broome Street Day Care Center • Crawford Community Early Learning Center • CSD 15/Lutheran Family Health Centers Even Start • Cypress Hills Child Care Center • Cypress Hills Head Start • Dawning Village Day Care Center • Dewitt Reformed Church Head Start I • Dewitt Reformed Church Head Start II • Dominican Sisters Family Health Service • Dorothy Day Early Head Start and Dorothy After School Program • Dr. Richard Green Day Care Center • Dr. Richard Green Learning Center Head Start • E. Shalom Park Lane Preschool • E. Shalom Preschool - Lefferts • E.L. Cleaveland Day Care Center • EA Lillian Wald Day Care Center • East Harlem Block Nursery School I • East Harlem Block Nursery School II • East Harlem CHS Bilingual Head Start I • East Harlem CHS Family Day Care • Easter Seals Child Development Center: Early Intervention Program • ECDO Child Start Center • Educational Alliance After 3 Arts • Educational Alliance Child Care Center • Educational Alliance Early Head Start • Educational Alliance Head Start • Educational Alliance Head Start @ PS 15 • Educational Alliance PS 064 Head Start • Educational Alliance PS 142 Head Start • Eis Laasois/Williamsburg Infant & ECD Center • Ella Baker/Charles Romain CDC • Escalera Head Start • Excellence Baby Academy • Family Head Start • Bensonhurst • Family Head Start - Brighton Beach • Family Head Start - East Flatbush • Farragut Children's Center • Forest Park School • Gan Day Care Center • Georgia L. McMurray Day Care • Goddard Riverside Day Care Center • Goddard Riverside Head Start • Grace Preschool Day Care Center • Graham-Windham Williamsburg Child Care Center • Grand Street Settlement Child & Family Center • Grand Street Settlement Child Care Center • Grand Street Settlement Head Start • Gwendolyn B. Bland Day Care Center • HAC Marshall England Early Childhood Learning Center • HAC Paradise Learning Center • Haitian American Day Care Center III • Hamilton Madison House Head Start V • Hamilton-Madison House Child Care Center I • Hamilton-Madison House Child Care Center II • Hamilton-Madison House Head Start I • Hamilton-Madison House Head Start III • Hamilton-Madison House Head Start IV • Harbor Family Horizons Daycare Center • Harbor Oasis Day Care Center • Harlem Gems Head Start • Harlem Gems UPK • Hartley House Family Day Care • Helen Owen Carey Child Development Center • HELP Morris Early Childhood Program • Henry Street Settlement Day Care Center I • Henry Street Settlement Family School • Herbert G. Birch - Nazareth • Herbert G. Birch - Springfield Gardens Early Childhood

Center • Highbridge Advisory Council Day Care Center • Highbridge Nursery School • Highway Nursery School • Holmes Tower - Eisman Day Nursery • Holy Spirit Head Start • Hospital Clinic/ACE Integration • Hudson Guild Children Center • International Children's School • Inwood House • James L. Varick Day Care Center • James Weldon Johnson Head Start I • JCCA Family Day Care • Jerome Hardeman Child Care Center • John Coker Day Care Center • John F. Kennedy Child Care Center • John Oravec Child Care Center • Joseph DiMarco Child Care Center • Joseph DiMarco Family Day Care • Keshet Learning Center • KHCC Head Start & Early Head Start • Kid Krazy • Kiddies Learning Center • La Peninsula Head Start 6 - Grantee • La Peninsula Head Start I @ Manida • La Peninsula Head Start II • La Peninsula Head Start IV • La Peninsula Head Start V • La Peninsula Head Start VII • Learning Works Group Family Day Care • Leggett Memorial Child Care Center • Lenox Hill Neighborhood House Early Childhood Center • LIFE Head Start • Lincoln Square Neighborhood Center • Little Angels/St. Nicholas of Tolentine Head Start • Little Meadows Early Childhood Center • Little Sun People, Too! • Mabel Barrett Fitzgerald Day Care & School Age Program • Madeleine Jones Head Start II • Magical Years Early Childhood Center • Marble Hill Head Start • Marble Hill Nursery School • Marcy Children's Center • Mary Walton Children's Center • Medgar Evers College Head Start I • Medgar Evers College Head Start II • Metro North Day Care Center • Mid-Bronx CCRP Early Learning Center • Mid-Bronx CCRP Head Start • Miriam Campbell Home Care Program • Monsignor Boyle Head Start • Morris L. Eisenstein Learning Center • Mosaic Prep • Mosdoth Day Care Center • Moshulu Montefiore Head Start • Mott Haven Academy • Myrtle P. Jarmon Early Childhood Educational Center • Nat Azarow Day Care Center • Neighborhood Childrens Center • Nevins Day Care Center • New Life Child Development Center @ Woodbine • New Life Greene Head Start • New Life Grove Head Start • New York Founding FDC • Nicholas Cardell Day Care Center • Northside Center for Child Development- Susan Patricof Head Start Center • Nuestros Ninos Day Care Center III • Nuestros Ninos I • Nuestros Ninos II • Odyssey House Family Center • Ohel Sarah Day Care Center • Ohr Menachem • Our Children's Center • Our Queen of Martyrs Head Start • P.S. 105 • P.S. 107Q • P.S. 120 • P.S. 124 • P.S. 132 • P.S. 145 • P.S. 178 • P.S. 180 Hugo Newman College Prep • P.S. 184 • P.S. 188/Island • P.S. 197x • P.S. 209 • P.S. 214 • P.S. 249 • P.S. 257 • P.S. 272 • P.S. 274k • P.S. 276 • P.S. 33q • P.S. 42M • P.S. 50Q • P.S. 62 • P.S. 72M • P.S./M.S. 306 • Padre Kennedy Head Start • PAL Arnold & Marie Schwartz Head Start • PAL Carey Gardens Day Care Center • PAL Miccio Day Care Center • PAL Miccio Head Start • PAL Quincy Day Care-Head Start Collaboration • PAL Western Queens Nursery School • PAL World of Creative Experience Head Start • PAL World of Little People Head Start • Park Place Day Care Center • Paul T. Matson Head Start I • Paul T. Matson Head Start II • Paul T. Matson Head Start III • Paul T. Matson Head Start IV • Paul T. Matson Head Start V • People's United Methodist Head Start • Phipps Head Start • Phipps Lambert Head Start • Project Social Care Head Start I • Project Social Care Head Start II • Project Social Care Head Start III • Puerto Rican Family Institute Head Start • Queensbridge Day Care Center • Quick Start Head Start • Quo Vadis Montessori Day Care Center • Rainbow School for Child Development • Robert F. Kennedy Child Care Center • Rockaway Child Care Center • Rockaway Head Start • Round Table Child Care Center • Round-the-Clock Nursery, Inc. • Sacred Heart Head Start II • Sacred Heart I Head Start • SCO - Brownsville Partnership • SCO - Family of Services Early Childhood Center • SCO - Family of Services Parent, Child and Home Program • SCO - Early Childhood Center @ Groundwork • Seventh Avenue Center for Families Head Start I • Seventh Avenue Center for Families Head Start II • Sheldon R. Weaver Day Care Center • Shira Head Start - Bais Yaakov • Shira Head Start - Beth Hillel • Shira Head Start - Bnos Zion • Shira Head Start - Boyan • Shira Head Start - Chasan Sofer • Shira Head Start - Gur • Shira Head Start - Shaarei Hayosher • Shira Head Start - Spinka • Shira Head Start - Yesodei Hatorah • Silver Lake Head Start I • Silver Lake Head Start II • SIMH Head Start I-Dongan Hills • SIMH Head Start II • SIMH Head Start III--Kingsley • SIMH Port Richmond Day Nursery • Smart Start Early Childhood Center, Inc. • Soundview Child Care Center • South Jamaica Center for Children & Parents • South Jamaica Center for Children & Parents II • South Jamaica Center for Children & Parents III • St. Andrew's Community Day Care Center • St. Anthony's Head Start • St. John's Day Care Center • St. Joseph Head Start • St. Malachy's Head Start • St. Margaret Mary Head Start • St. Mark's Head Start • St. Martin of Tours Head Start • St. Matthew's & St. Timothy's Day Care Center • St. Rita's Head Start • St. Simon Head Start • Staggs Street Center for Children • Star America Preschool • Starlight Day Care Center • Starrett Early Learning • Stepping Stone Day School • Summer Children's Center • Sunset Park Even Start • Sunset Park Family Day Care • Sunset Park Head Start • Sunshine School Child Care Program • Sunshine School UPK • Susan E. Wagner Day Care Center • Tabernacle Day Care Center • The Brooklyn Brownstone School • The Salvation Army - Bedford Day Care Center • The Salvation Army - Bronx Day Care Center • The Salvation Army - Brownsville Day Care Center • The Salvation Army - Bushwick Day Care Center • The Salvation Army - Fiesta Day Care Center • The Salvation Army - Inwood Nursery • The Salvation Army - Sutter Avenue Day Care Center • The Salvation Army - Tremont Day Care Center • Therese Cervini Family Day Care • Therese Cervini Head Start and Annex • Tompkins Children's Center • Trabajamos Community Head Start III • Tremont-Crotona Head Start • Trinity Lutheran School • Union Settlement - Franklin Plaza Head Start • United Academy Inc. • United Lubavitcher Yeshiva Day Care Center • United Talumudical Academy • University Settlement Early Childhood Center • University Settlement Early Head Start • UPK/EvenStart_Dis79 • Uptown Harlem Gems • Utopia Children's Center • Vincent J. Caristo Child Care Center • Virginia Day Nursery • Visiting Nurse Service Early Head Start • Warren Street Center For Children and Families • Washington Heights Child Care Center • We Learn Together Even Start • West 83rd Street Preschool of St. Matthew's and St. Timothy's • West Harlem Head Start I • West Harlem Head Start II • West Side Montessori School • WHEDCO Urban Horizons Early Childhood Discovery Center • Williamsburg Y Head Start • Yeled V'Yalda Gan Tziporah • Yeled V'Yalda Head Start • Yeled V'Yalda Head Start I • Yeled V'Yalda Head Start II • Yeled V'Yalda Head Start IX • Yeled V'Yalda Head Start V • Gan Yisroel • Yeled V'Yalda Head Start VI • Yeled V'Yalda Head Start VII • Yeled V'Yalda Head Start VIII • Yeled V'Yalda Head Start X • Yeled V'Yalda Head Start XI • Yeled V'Yalda Head Start XII • Yeled V'Yalda Head Start XIII • Yeled V'Yalda Head Start XIV • Yeshiva Head Start I • Yeshiva Head Start IV • Yeshiva Tifereth Moshe Day Care Center • Young Minds Day Care Center • YWCA Brownsville Early Learning Center • YWCA Polly Dodge Early Learning Center • YWCA Richmond Early Learning Center • YWCA Roberta Bright ELC • Zion Day Care Center

PARTNER CULTURAL INSTITUTIONS

Alice Austen House Museum
American Folk Art Museum
American Museum of Natural History
Anne Frank Center
Asia Society
Asian American Arts Centre
Bronx Museum of the Arts
Brooklyn Botanic Garden
Brooklyn Children's Museum
Brooklyn Historical Society
Brooklyn Museum
The Cathedral Church of Saint John the Divine
Center for Architecture
Center Jewish History
Central Park Zoo
Chelsea Art Museum
Children's Museum of Manhattan
Children's Museum of the Arts
Children's Galleries for Jewish Culture
The Cloisters
Cooper-Hewitt, National Design Museum
Drawing Center
Dyckman Farmhouse Museum
El Museo del Barrio
FDNY Fire Zone
Flushing Council on Culture and Arts
Gracie Mansion
The Hispanic Society of America Museum and Library
Historic Richmond Town
International Center of Photography
Intrepid Sea, Air & Space Museum
The Jacques Marchais Museum of Tibetan Art
Jamaica Center for Arts & Learning
Japan Society
The Jewish Museum
King Manor Museum
Lefferts Historic House Museum
Louis Armstrong House Museum
Merchant's House Museum
The Metropolitan Museum of Art
The Morgan Library & Museum
Morris-Jumel Mansion
Mount Vernon Hotel Museum and Garden
Museum at Eldridge Street
The Museum at FIT
Museum of American Finance
Museum of Arts and Design
Museum of Biblical Art
Museum of Chinese in America
Museum of Contemporary African Diasporan Arts
Museum of Jewish Heritage - A Living Memorial to the Holocaust
The Museum of Modern Art
Museum of the City of New York
Museum of the Moving Image
National Academy Museum & School of Fine Arts

The National Jazz Museum in Harlem
National Museum of the American Indian
The New York Botanical Garden
New York City Fire Museum
The New York City Police Museum
New York Hall of Science
New York Transit Museum
New-York Historical Society
The Noguchi Museum
P.S. 1 Contemporary Art Center
The Paley Center for Media
Prospect Park Audubon Center
Prospect Park Zoo
Queens Botanical Garden
Queens Historical Society at Kingsland Homestead
Queens Museum of Art
Queens Zoo
Rubin Museum of Art
Schomburg Center for Research in Black Culture
Skyscraper Museum
Snug Harbor Cultural Center & Botanical Garden
Socrates Sculpture Park
Solomon R. Guggenheim Museum
Sony Wonder Technology Lab
South Street Seaport Museum
Staten Island Children's Museum
Staten Island Museum
Staten Island Zoo
The Studio Museum in Harlem
Van Cortlandt House
Wave Hill
Weeksville Heritage Center
Whitney Museum of American Art
Wyckoff Farmhouse Museum
Yeshiva University Museum

COOL CULTURE SUPPORTERS

Altman Foundation
American Corporate Benefits, Inc.
Benchmark
Brodock
Brooklyn Community Foundation
Better Execution
Bloomberg LP
Brooklyn Arts Council
Capuchin Food Pantries
Carnegie Corporation of New York
Con Edison
EmblemHealth
Fairway
FILCO
Glamour Magazine for Dinner with Bevy
Granet Foundation
Heckscher Foundation for Children
HUGO BOSS
Hyde and Watson Foundation
Keith Haring Foundation
Laura B. Vogler Foundation
Limited Brands Foundation
Louis & Anne Abrons Foundation
Macy's East
Mary Duke Biddle Foundation
MAX LOSK
New York City Administration for Children's Services

New York City Council, New York City Department of Cultural Affairs
The New York Community Trust
New York Times Company Foundation
The Peninsula Foundation
The Shelley & Donald Rubin Foundation
Seiter & Miller Advertising
Taproot Foundation
Target
Troutman Sanders LP
Union Square Arts Award - a Project of the Tides Center
WABC-TV
Ward & Olivo
Whole Foods Market
Y INTERACT

BOARD OF DIRECTORS

Lynne Biggar
American Express
Consumer Travel Network, USA
Lois Gelernt
Manhattan Country School
Edward Jay Goldberg
Macy's, Inc.
Karen Lederer
Troutman Sanders LLP
Carol Matorin
Limited Brands, Inc.
Edwina Meyers
NYC Children's Services
Lawrence Provette
Stagg Street Center for Children
Bevy Smith
DinnerwithBevy.com
Gail Velez
Family Publications, Inc.
Ahmed Yearwood
Y INTERACT

COOL CULTURE STAFF

Candice Anderson
Executive Director
Monica Abend
Program Director
Lindsay Booker
Communications Assistant
Li Zhou
Program Assistant
Sara Danielle David
Program Intern
Erica Freyberger
Program Intern
Shifra Goldenberg
Program Intern
Eric Hertz
Program Intern
Elissa Verrilli
Communications Intern