

Cool Culture® provides 50,000 underserved families with free, unlimited access to 90 cultural institutions - so that parents can provide their children with educational experiences that will help them succeed in school and life.

sponsored by 



## Too Cool—Families Catch the Cool!

The Cool Culture community came together to Catch the Cool on June 8th at the Museum Mile Festival! Thousands painted, drew, danced and partied on Fifth Avenue from 105th Street to 82nd Street, dropping in museums along the way.

All evening, families popped in to the paper canoe workshop at *The Metropolitan Museum of Art*. Omari (five) proudly showed off his artwork, counting the stars and feathers on a canoe that he made for his mom, Felicia Williams.

Sophia Zaldivia (three) and her sister Isabella (seven) excitedly worked on their own canoes at the next table. “We do a lot of arts and crafts at home,” said their mom, Ethel. “They absolutely adore it.”

“Learning is the point, definitely,” said Ana Roque, as she watched her daughter Jashleen Jaquez (five) stamp a postcard with a park scene at *El Museo del Barrio*. “Jashleen learns so much. She’s a sponge!”

“In the museum, there is a lot of culture that I didn’t know about, like the bed and the picture that has a human being and a nest,” explained Emy Perez (seven) as she explored *El Museo* with her mom Evelyn Garcia, brother Jeremy (eleven) and sister Elaine (five).

**Families also soaked up the artistic atmosphere on the streets outside!**

“I love this... I think it’s great,” said Nadia Reyes, whose six-year-old daughter Catherine was drawing with sidewalk chalk.

Sergio Fitzpatrick (four) said his favorite part of the night was watching the street performers. His sister, Argentina (seven),



Jeremy Perez, Evelyn Garcia, Emy Perez and Elaine Perez

couldn’t choose just one. “I really liked making stuff and meeting my friend and getting a poster by (artist) Michael Albert,” she said. The siblings – along with their sister Ysabel (one), mom Yvette and aunt Vanessa Griffith – participated in art activities that included crafting monkey ears at *The Jewish Museum*, creating masterpieces with sidewalk paint at *Cooper-Hewitt, National Design Museum*, and constructing paper canoes at *The Metropolitan Museum of Art*.

**The Cool Culture Hunt Cards with clues and activities made exploring museums**

**even easier and more exciting!** They can be downloaded at <http://www.coolculture.org/activities/culture-hunt> and used to explore museums on the Mile. “They’re really cool,” said Idele White, Family Worker at Seventh Avenue Center for Families Head Start, of the free cards.

“We went into the *Museum of the City of New York* and there were all different types of cars in there,” Ms. White said. “It was really nice.”

“The kids wanted to see the Curious George exhibit at *The Jewish Museum*, and then we got caught up on the streets, with the drawing and the clowns and the balloons,” said Stanley Mayerfeld, who was accompanied by his wife Malky and sons Aryeh (twenty months), Simcha (four) and Avi (six).

“The kids loved it just as much as we enjoyed it,” said Ms. Mayerfeld.

**Who knows what Cool Culture adventures await you and your family! Be one of the first 15 families to submit a photo of your family posed in front of *The Metropolitan Museum of Art* to [family@coolculture.org](mailto:family@coolculture.org) and WIN a copy of *You Can’t Take a Balloon Into the Metropolitan Museum!***

by Erin Cassin Dial 1 # 

## CHECK IT OUT!

THE METROPOLITAN  
MUSEUM  
OF ARTDial 78 & 79 # 

Family programs take place in the Uris Center for Education

**ART TREK****SATURDAYS & SUNDAYS,  
11AM-NOON & 2:30-3:30pm**Be an art explorer! Take a new voyage around the globe every time you visit the Met.  
AGES 5-12 FP**HOW DID THEY DO THAT?  
EVERY SECOND SATURDAY &  
SUNDAY, EVERY HALF HOUR  
FROM 1-4pm**

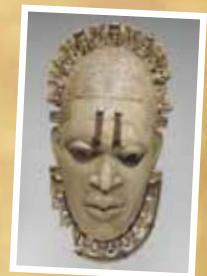
Peek at technique and learn—through handling tools and materials—how works of art were created. ALL AGES FP

**START WITH ART AT THE MET  
RECURRING, CHECK THE  
MET'S WEBSITE FOR DATES  
AND TIMES**Kids have fun at the Met through storytelling, sketching, and other ways of exploring art!  
AGES 3-7 FP**STORYTIME IN NOLEN LIBRARY  
WEDNESDAYS AND FRIDAYS,  
10:30-11am**Explore the world of art through engaging picture books selected from the library's collection!  
AGES 4-7 FPTo learn more about what you can see and do at The Metropolitan Museum of Art, visit [www.metmuseum.org](http://www.metmuseum.org).Catch the cool at the Met with Cool Culture Hunt Cards! Download and begin your adventure, visit [www.coolculture.org](http://www.coolculture.org).The Metropolitan  
MUSEUM OF ART

Imagine journeying around the world without actually leaving New York City!

Cool Culture families did just that when they caught the cool, exploring **The Metropolitan Museum of Art** during the Museum Mile Festival on June 8th. Using the *Cool Culture Hunt Card*, they ventured through the Arts of Africa, Oceania and the Americas Galleries looking for a king's intricate ivory pendant mask from Benin.You, too, can time travel the world with a visit to **The Metropolitan Museum of Art**, which boasts more than two million works of art collected from every corner of the earth!

"Our focus is to really show our audiences the world," says John Welch, the Met's Museum Educator in Charge of Youth Programs. "In our collections, we have over 5,000 years of history and art from every culture imaginable, so it's an opportunity for a family – both the children and the adults – to really learn more about the world and cultures from the past and also of the present."

A favorite spot for kids is the Modern Art Galleries, where you can see art focused on colors and shapes. Look for painter Ellsworth Kelly's beautiful rainbow, entitled *Spectrum V*, featuring brightly painted panels that stretch across one wall. Or find artist Jean Tinguely's funky *Narva* sculpture, which is made out of tubes and wheels that move like a machine!

Time travel to places all over the world without stepping outside the

Top: Facade of The Metropolitan Museum of Art.

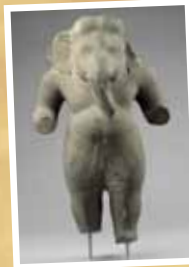
Center image: *Queen Mother Pendant Mask: Iyoba*, 16th century; Nigeria; Edo peoples, Court of Benin; ivory, iron, copper (?); The Michael C. Rockefeller Memorial Collection, Gift of Nelson A. Rockefeller, 1972 (1978.412.323). Image courtesy of The Metropolitan Museum of Art.

museum. Go back to the Middle Ages with a walk through the Arms and Armor Galleries, and see knights in armor. Maybe they're waiting to ride into battle on their horses! When you find yourself in ancient Egypt be sure to honor the goddess Isis in the Temple of Dendur. Or even take a stroll through Astor Court, a recreation of a centuries-old Chinese garden courtyard from the Ming Dynasty.

**With each trip to the Met, you're sure to discover something new!**

"We want Cool Culture families to continue to come to us and either enjoy the museum on their own or through our regular programming," says Mr. Welch.

**"Learning about art is so much more than just learning what art looks like," says Mr. Welch. "Art will help children in school, art will help them develop social skills and verbal skills, and art is so much a part of the culture we live in now and all of the cultures that they'll learn about from the past here at the museum."**



The kids programs are a great introduction to the collections, especially if you're nervous about exploring them on your own. See the Check It Out box on page two for a list of fun activities!

"It's also being with a beloved family member and setting down memories," says Museum Educator Michael Norris. "Families can approach it as a life-long relationship... the Met has been around for 140 years, so we plan to be around for that child and their children and their grandchildren, too."

*Start your adventure today!* Make your family's exploration of the Met easier and more enjoyable by using the different guides and activities created by both Cool Culture and the Met. To download awesome activities and a family map of the Met before and after your visit, go to <http://metmuseum.org/explore/publications!> The museum's family guides (which are also available at the Met's information desk) will lead you and your family on a learning adventure, discovering amazing art and artifacts on display. With so many fascinating objects to see, try focusing on just one or two of the museum's galleries during your visit. You can always come back for more!

Begin your *Cool Culture Hunt* for the Pendant Mask with your children today! Just download and print out the *Cool Culture Hunt Card* for the Met, and the "Honoring the King's Mother" activity guide, and bring them with you to the museum. Look for these tools and others in the <http://www.coolculture.org/activities/whats-hot> section of Cool Culture's website.

- by Erin Cassin

Above Image: *Standing Ganesha*, Pre-Angkor period, 2nd half of 7th century; Cambodia; stone; Louis V. Bell and Fletcher Funds, 1982 (1982.220.7). Images courtesy of The Metropolitan Museum of Art.



## CONNECT

Cool Culture's audio tour guide allows you to connect to the Cool Culture community.



**HEAR**  
about cultural events  
and family programs



**GET**  
reviews of cultural  
activities




**LEARN**  
fun facts and history  
about NYC culture



**SHARE**  
your family's stories  
with our community

## IT'S EASY AND FREE!

Dial **718-408-2393**

1. Look for this symbol  in the Family Time newsletter
2. Enter the item number, followed by the # key
3. You can enter another item number anytime you want. Each recording is about 1 minute long

## BEGIN YOUR COOL CULTURE HUNT!

Download your set of Cool Culture Hunt Cards, featuring works of art from

El Museo del Barrio, The Jewish Museum, Cooper-Hewitt National Design Museum, Solomon R. Guggenheim Museum

and The Metropolitan Museum of Art, and fun activities for the whole family!

Go to:

[www.coolculture.org/activities/culture-hunt](http://www.coolculture.org/activities/culture-hunt)

## WANT MORE?

Visit [www.coolculture.org](http://www.coolculture.org) and the **ACTIVITIES** section for activity guides and many more tips on exciting ways to explore and learn anytime!

## STAY TUNED

**COOL CULTURE** **WEBSITE**  
www.coolculture.org



Become our fan on FACEBOOK—just search for “Cool Culture”



twitter.com/coolculture



Sign up for our monthly e-zine online

**AMERICAN FOLK ART MUSEUM,** FAMILIES AND FOLK ART, 1-2:30pm, First Saturday of every month. Learn about folk art—join an interactive discussion-based tour in the galleries followed by hands-on artmaking activities inspired by objects in the museum! AGES 4-12 FP

**Dial 29 #**

**COOPER-HEWITT, NATIONAL DESIGN MUSEUM**

TARGET DESIGN KIDS: IMAGINATION PLAYGROUND, 10am-Noon, Tuesdays. Drop-in to hear stories, play with blocks and design materials to explore, build and design. AGES 2-4 FREE

**Dial 74 & 75 #**

**EL MUSEO DEL BARRIO**

SUPER SÁBADO! TARGET FREE THIRD SATURDAYS AT EL MUSEO, 11am-8:30pm, Third Saturday of every month. Come explore the vibrancy and diversity of Latino Culture! Through free concerts, exhibitions, gallery tours, art-making workshops, walking tours, film screenings, and spoken word recitals, SUPER SABADO! showcases traditions, cultural expressions, and the latest in Latino art. Visit [www.elmuseo.org](http://www.elmuseo.org) for schedule and more details. ALL AGES FREE

**Dial 70 and 71 #**

**FLUSHING MEADOWS CORONA PARK**

TARGET PASSPORT FRIDAYS 2010, 6:30-10pm, Fridays through August 27. Bring a picnic blanket for the 6th season of the Queens Museum of Art's annual outdoor summer festival of international music, dance and film. Each evening begins with live dance and music performances followed by a feature film screening after sunset. ALL AGES FREE

**THE JEWISH MUSEUM**

DROP-IN ART WORKSHOP, 1-4pm & STORYBOOKS + ART, 1:15PM, Every Sunday and DIG DROP-IN, NOON-3PM, Second Sunday of every month. Come and paint, draw, sculpt or craft a work of art, or listen to a story from our library of children's book favorites, then participate in an art activity in the Museum's galleries, or join an archaeological dig. AGES 3+ FP

**Dial 72 and 73 #**

**MUSEUM OF MODERN ART**

TOURS FOR FOURS, 10:20-11:15am, Saturdays & Sundays beginning September 18. Look, listen, and share ideas while you explore modern and contemporary art. Movement, drawing, and other gallery activities give everyone the chance to participate. Each month a new theme is introduced. AGE 4 FP

**NATIONAL MUSEUM OF THE AMERICAN INDIAN**

ESPECIALLY FOR KIDS, 10:30 & 11:45am, Everyday. Stay cool with special screenings for the family in The Screening Room at George Gustav Heye Center. Films include: *Wapos Bay: As Long as the River Flows*, *Elal y los Animales/Elal and the Animals*, and *El Ultimo Elote/The Last Ear of Corn* through September 12th; and, *Popol Vuh: the Quiché Maya Creation Myth*, *El Fantasma de la Milpa/Phantom of the Milpa*; *Day and Night*, and *Tales of Wesakechak: How Wesakechak Got*

## CATCH THE COOL AT 90 PARTNER CULTURAL INSTITUTIONS WITH THE COOL CULTURE FAMILY PASS!

The Family Pass covers general admission for 5 people. Remember, bring your ID!

*His Name* through November 7th. Visit [www.nmai.si.edu](http://www.nmai.si.edu) for more information. ALL AGES FREE

**THE NEW YORK BOTANICAL GARDEN**

DIG, PLANT, GROW! 1:30-5:50pm, Tuesday - Sunday. Dig, weed, compost, plant, tend, and harvest in the garden plots in the Ruth Rea Howell Family Garden! ALL AGES FP

**RUBIN MUSEUM OF ART,**

THE YAK PACKERS, 10:30-11:30am, Thursdays. Look at, touch, and explore Himalayan art inspired by the collection. Program meets in the studio. AGES 2-4 FP

**SOLOMON R. GUGGENHEIM MUSEUM**

JUST DROP IN! 1-4pm, Sundays. Explore highlights of the permanent collection through creative, interactive projects led by museum educators. AGES 3-10 FP

**Dial 76 and 77 #**

**WAVE HILL**

STORIES IN THE GARDEN, 11am, Tuesdays. Each week, a “mystery reader” from Wave Hill’s staff shares a story with your budding young naturalists in a shady nook of the garden. Sessions are held outdoors only and are weather dependent. Meet at Perkins Visitor Center, AGES 3+ FREE

## KEEP ON CATCHING THE COOL!

The Museum Mile Festival has passed, but you and your family can still *Catch the Cool!* Get the scoop on museums on the mile: visit [www.coolculture.org](http://www.coolculture.org) to get Cool Culture Hunt Cards, Activity Guides and more! Plus:

**GET LUCKY**—make a visit to The Metropolitan Museum of Art! Be one of the first 15 families to submit a photo of your family posed in front of The Metropolitan Museum of Art to [family@coolculture.org](mailto:family@coolculture.org) and WIN a copy of *You Can't Take a Balloon Into the Metropolitan Museum!*

### CONGRATS TO THE CATCH THE COOL PRIZE GIVEAWAY WINNERS!

Congratulations to The Martinez Family of Kid Krazy Daycare, winners of the Maclaren Stroller, and to The Sullivan Family of Marble Hill Nursery School, winners of the Macy's Thanksgiving Day Parade VIP Viewing Passes! For a complete list of winners, and to see pictures from the event, go to [www.coolculture.org](http://www.coolculture.org)!

### SHARE YOUR PHOTOS ON COOL CULTURE'S FACEBOOK PAGE!

Were you among the thousands of parents and children that enjoyed art activities and street entertainment with the Cool Culture community on June 8th? Post your Museum Mile Festival photos to Cool Culture's Facebook Page!

**Board of Directors:** Lois Gelernt • Edward Jay Goldberg • Karen Lederer • Carol Matorin • Edwina Meyers • Lawrence Provette • Bevy Smith • Gail Velez • Ahmed Yearwood

**Staff:** Candice Anderson, Executive Director • Monica Abend, Program Director • Barbara Palley, Education Manager • Li Zhou, Program Assistant • Lindsay Booker, Communications Assistant

**Saturday & Sunday, August 14 & 15**

FLUTTER WITH THE BUTTERFLIES/JUEGUE CON LAS MARIPOSAS, 10am-1pm  
See butterflies and sketch them, flying and sipping at their favorite flowers, then make a butterfly hat to wear as you sail across the landscape in the Ecology Building. WAVE HILL, Bronx. ALL AGES FREE

**Saturday, August 21**

A MEDIEVAL RAINBOW WITH CARLEEN COULTER, 1pm  
Come for a family gallery workshop and learn about medieval Europe through the art and architecture of the time. THE CLOISTERS MUSEUM AND GARDEN, Manhattan. AGES 4-12 FP

HANDS-ON HISTORY: DOG DAYS OF SUMMER, Noon-3pm

Did you know that Rufus King loved dogs? Come learn about Rufus King's dogs, and their importance on the farm, from Rufus King's letters, anecdotal stories, storybooks, songs, and a craft project. KING MANOR MUSEUM, Queens. ALL AGES FP

**Sunday, August 22**

TARGET FREE SUNDAYS—INTERACTIVE PERFORMANCE: NEW YORK CITY PUPPET THEATRE, 1pm  
Watch a performance by New York City Puppet Theatre, the oldest African-American puppet theatre in the country. STUDIO MUSEUM IN HARLEM, Manhattan. ALL AGES FREE

**Tuesday-Thursday, August 24-26**

AIR FORCE WEEK

Welcome Air Force Week in New York City! Intrepid's pier will be lined with displays and fun interactives from the Air Force and educational demonstrations and a special ceremony on the Flight Deck of Intrepid! INTREPID SEA, AIR & SPACE MUSEUM, Manhattan. ALL AGES FP

**Saturday, August 28**

JAPANESE TAIKO DRUM: FAMILY PERFORMANCE, 3pm  
Join *Taikoza*, a thunderous Japanese percussion group that uses large, barrel-like taiko drums, shakuhachi, bamboo flutes known as fue, and the Koto—a 13-stringed instrument, for a fabulous performance of music and dance based on forms traditionally performed at Japanese festivals. MUSEUM OF THE CITY OF NEW YORK, Manhattan. ALL AGES FP

**Saturday & Sunday, August 28 & 29**

FAMILY SCREENING & WORKSHOP: BUILD A

SPEEDY VEHICLE, 12:30pm

Laugh out loud as Harold Lloyd races the last horse-drawn trolley right through Washington Square Arch, in this classic silent, Speedy! Then rush to our workshop to make a fast-movin' horse-drawn streetcar or elevated train to take home. NEW YORK TRANSIT MUSEUM, Brooklyn. ALL AGES FP

**Saturday, September 11**

HANDS-ON HISTORY: BACK TO SCHOOL  
Get ready for back to school with family-friendly stories, crafts and other activities! To learn more visit [www.kingmanor.org](http://www.kingmanor.org). KING MANOR MUSEUM, Queens. ALL AGES FP

**Saturday & Sunday, September 11 & 12**

HARVEST DAYS, 1-4pm

Celebrate the 2010 harvest the same way Brooklynites did years ago. Come harvest, cook and eat the potatoes planted in May. Work the cider press, churn butter, run potato sack races, and see how flax is spun into linen thread by watching a spinster spin at an old-fashioned wheel! LEFFERTS HISTORIC HOUSE, Brooklyn. ALL AGES FREE

**Sunday, September 12**

TARGET FREE SUNDAYS—HANDS ON: MANY HANDS MAKE LIGHT WORK: COMMUNITY COLLOGRAPH, Noon-3pm

Join a special collaboration with *The Laundromat Project*, a community-based non-profit arts organization, led by teaching artist Rosemary Taylor and work together to experiment with abstract form and colored inks to make a series of collagraph prints. Make your own printing plate and collaborate with other participants to create and display a large-scale printed banner! STUDIO MUSEUM IN HARLEM, Manhattan. ALL AGES FREE

**Sunday, September 26**

SHAKE IT FOR SUKKOT! 1-4pm

Design a colorful shaker mobile using fabric, tubes, handmade papers, raffia, wire and more. Hang it in a sukkah or shake it like a musical instrument! THE JEWISH MUSEUM, Manhattan. AGES 3+ FREE

Dial 72 and 73 # 

**Saturday, October 2**

CHILE PEPPER FIESTA

New York's hottest fall tradition features music and dance from chile-loving regions around the world, as well as workshops, food demonstrations (and samples!), and a chocolate chile cabana. BROOKLYN BOTANIC GARDEN, Brooklyn. ALL AGES FP

THE INTERNATIONAL DAY OF NON-VIOLENCE

Join us all day for an art- and peace-making extravaganza with interactive performances, demonstrations, scavenger hunts, and much more. For more information visit [www.rmanyc.org](http://www.rmanyc.org). RUBIN MUSEUM OF ART, Manhattan. ALL AGES FP

**Saturday, October 9**

HANDS-ON HISTORY: HARVEST, Noon-3pm

Learn about harvest time with family-friendly stories, crafts and other activities! To learn more visit [www.kingmanor.org](http://www.kingmanor.org). KING MANOR MUSEUM, Queens. ALL AGES FP

**Monday, October 11**

DINOSAURS AND MORE featuring RICHIE MIRISSIS, 1:30-3:30pm

Join dinosaur enthusiast, Richie Mirissis, as he presents some amazing fossils, three-dimensional models, and memorabilia from his vast collection. Make a clay fossil mold with the help of our knowledgeable volunteers. Donation suggested. STATEN ISLAND ZOO, Staten Island. AGES 5+ FP

**Saturday, October 16**

THUNDERBIRD SOCIAL, 7-10pm

Join the Thunderbird Indian Dancers and Singers, directed by Louis Mofsie (Hopi/Winnebago) in an evening of traditional social dancing. Heyna Second Sons are the featured drum group. NATIONAL MUSEUM OF THE AMERICAN INDIAN, Manhattan. ALL AGES FREE

**Saturday, October 23**

MEET THE AUTHORS: PAUL DUBOIS JACOBS & JENNIFER SWENDER, 1:30pm

Authors Paul DuBois Jacobs and Jennifer Swender lend their voices to a lively and melodious reading of their classics, *My Subway Ride* and *The Deaf Musicians*. NEW YORK TRANSIT MUSEUM, Brooklyn. ALL AGES FP

**October 30**

FALL FESTIVAL, Noon-2pm

Come celebrate the end of the harvest season, and the final day of Weeksville's Farmers Market. Enjoy food, free tours of the Historic Hunterly Road Houses, Pony Rides with the Black Cowboys, Children's Cooking Class (registration required) and the 4th Annual Weeksville Iron Chef Competition! WEEKSVILLE HERITAGE CENTER, Brooklyn. ALL AGES FREE

FP = Free with Cool Culture Family Pass

FREE = Free to all

## HALLOWEEN

### Spooky Fun for the Whole Family!

Saturday, October 23

HALLOWEEN PARTY 11am-2pm

Have a howling good time at the New York Police Museum's annual Halloween Party! NEW YORK CITY POLICE MUSEUM, Manhattan. AGES 3-12 FP

Saturday, October 30

DAY OF THE DEAD/ DIA DE LOS MUERTOS

Noon-4:30pm

Enjoy a fun filled day for the entire family including hands-on workshops, storytelling with the Colorado Sisters and Michael Heralda, and dance performances by Cetilitzli Nauhcampa (Mexico). NATIONAL MUSEUM OF THE AMERICAN INDIAN, Manhattan. ALL AGES FREE

HALLOWEEN HAUNTED WALK & CARNIVAL

Noon-3 pm

Deep in Prospect Park lies Lookout Hill, home of the annual Prospect Park Haunted Walk. Take your chances with the ghouls and goblins lurking within the trees ready to scare you silly! Young children should be accompanied by an adult. Rain or Shine. PROSPECT PARK, Brooklyn. ALL AGES FREE.

Saturday & Sunday, October 30 & 31

BOO AT THE ZOO

Have a frightening good time at this extreme Halloween party! Watch the animals devour their Halloween treats, tour the haunted barn, and make some festive crafts as you experience the thrills and chills of the Zoo during this spooky season. Wear your Halloween costume to the zoo; many zoo staff members will also be in costume! PROSPECT PARK ZOO, Brooklyn. ALL AGES FREE

CREEPY CRAWLY HALLOWEEN Noon-5pm

Take a second look at the creatures that give you the creeps – you may find you like them. Learn through crafts and experiments why spiders and worms are just a few nature's wonders that we would have tough time without. PROSPECT PARK AUDUBON CENTER, Brooklyn. ALL AGES FREE

SKELETON CUT-OUTS 1-4pm

Make your own Halloween headbands using the traditional Scharen-Knippen paper-cutting art form. LEFFERTS HISTORIC HOUSE, Brooklyn. ALL AGES FREE

SCARY STORIES FROM THE PAST 2 & 3 pm

Make sure you're sitting next to someone braver than you! Form a circle and listen to master storyteller Tammy Hall keep the tradition of scary stories alive with "The Legend of Pope's Lane," "The Domine's Ride," and more. LEFFERTS HISTORIC HOUSE, Brooklyn. ALL AGES FREE

**BRONX**

- 1. BRONX MUSEUM OF THE ARTS**  
1040 Grand Concourse at 165th Street | www.bronxmuseum.org | (718) 681-6000  
Hours: Thurs & Sat-Sun 11am-6pm, Fri 11-8pm.  
Subway: **B D 4** | Bus: Bx1, Bx2 or Liberty Express BxM4
- 2. THE NEW YORK BOTANICAL GARDEN**  
200th Street & Kazimiroff Boulevard | www.nybg.org | (718) 817-8700  
Hours: Tues-Sun 10am-6pm.  
Subway: **B D 4** transfer to the Bx26 | Bus: Bx26
- 3. VAN CORTLANDT HOUSE MUSEUM**  
Van Cortlandt Park, Broadway at West 246th Street | www.vancortlandthouse.org | (718) 543-3344  
Hours: Tues-Fri 10am-3pm, Sat-Sun 11am-4pm.  
Subway: **1** | Bus: Bx9 or Liberty Express BxM3
- 4. WAVE HILL**  
675 West 249th Street at Independence Avenue | www.wavehill.org | (718) 549-3200  
Hours: 9am-5:30pm. Subway: **A 4** transfer to Bx7 | Bus: Bx7 or Bx10

**BROOKLYN**

- 5. BROOKLYN BOTANIC GARDEN**  
1000 Washington Avenue | www.bbg.org | (718) 623-7200  
Hours: Tues-Fri 8am-6pm, Sat-Sun & holidays 10am-6pm  
Subway: **B A S 2 3 4 5** | Bus: B16, B41, B43, B48, or B71
- 6. BROOKLYN CHILDREN'S MUSEUM**  
145 Brooklyn Avenue | www.brooklynkids.org | (718) 735-4400  
Hours: Wed-Fri 11am-5pm, Sat-Sun 10am-5pm.  
Subway: **3 A C** | Bus: B25 B43 B44 B45 or B65
- 7. BROOKLYN HISTORICAL SOCIETY**  
128 Pierrepont Street | www.brooklynhistory.org | (718) 222-4111  
Hours: Wed-Fri 12-5pm, Sat 10am-5pm, Sun 12-5pm.  
Subway: **A C F M R 2 3 4 5** | Bus: B25, B26, B38, B41, B51, B52, B65 or B67
- 8. BROOKLYN MUSEUM**  
200 Eastern Parkway | www.brooklynmuseum.org | (718) 638-5000  
Hours: Wed-Fri 10am-5pm, Sat-Sun 11am-6pm.  
Subway: **2 3** | Bus: B41, B48, B69, or B71
- 9. LEFFERTS HISTORIC HOUSE**  
Flatbush Avenue & Empire Boulevard, in park | www.prospectpark.org | (718) 789-2822  
Hours: July and August: Thurs-Sun 12-6pm; October: Thurs-Sun 12-5pm  
Subway: **B Q S** | Bus: B16, B41, B43 or B48
- 10. MOCADA | MUSEUM OF CONTEMPORARY AFRICAN DIASPORAN ART**  
80 Hanson Place | www.mocada.org | (718) 230-0492  
Hours: Wed, Fri-Sun 11am-6pm, Thurs 11am-8pm  
Subway: **B C D G M Q R 2 3 4 5** | Bus: B25, B26, B38, B41, B45, B52, B63, B65 or B67
- 11. NEW YORK TRANSIT MUSEUM**  
Boerum Place at Schermerhorn Street | www.mta.info | (718) 694-1600  
Hours: Tues-Fri 10am-4pm, Sat-Sun 12pm-5pm.  
Subway: **A C F G M R 2 3 4 5** | Bus: B25, B26, B37, B38, B41, B45, B52, B61, B67 or B75

- 12. PROSPECT PARK AUDUBON CENTER**  
Lincoln Road & Ocean Avenue, in park | www.prospectpark.org/audubon | (718) 287-3400  
Hours: June, July, and August: Thurs-Sun 12-5pm; September, October, and November: Sat-Sun 12-4pm  
Subway: **B Q S** | Bus: B12, B16, B41, B43 or B48
- 13. PROSPECT PARK ZOO**  
450 Flatbush Avenue | www.prospectpark-zoo.org | (718) 399-7339  
Hours: Mon-Fri 10am-5pm, Sat-Sun 10am-5:30pm.  
Subway: **B Q S** | Bus: B41, B47, or B48
- 14. WEEKSVILLE HERITAGE CENTER**  
1698 Bergen Street | www.weeksvillesociety.org | (718) 756-5250  
Hours: Tues-Fri 10am-4:30pm  
Subway: **A C 3 4** | Bus: B15, B45, or B65
- 15. WYCKOFF FARMHOUSE MUSEUM**  
5816 Clarendon Road, in park | www.wyckoffassociation.org | (718) 629-5400  
Hours: Tues-Sat 10am-4pm.  
Subway: **2 5** to B8 | Bus: B47

**MANHATTAN**

- 16. AMERICAN FOLK ART MUSEUM**  
45 West 53rd Street | www.folkartmuseum.org | (212) 265-1040  
Hours: Tues-Thur & Sat-Sun 10:30am-5:30pm; Fri 11am-7:30pm.  
Subway: **B D E F M** | Bus: M1, M2, M3, M4, M5, M6 or M7
- 17. AMERICAN MUSEUM OF NATURAL HISTORY**  
Central Park West at 79th Street | www.amnh.org | (212) 769-5100  
Hours: Daily 10am-5:45pm.  
Subway: **B C 1** | Bus: M7, M10, M11, M79, M86 or M104
- 18. ANNE FRANK CENTER**  
38 Crosby Street, 5th floor | www.annefrank.com | (212) 431-7993  
Hours: Mon-Thurs 10am-4pm  
First Sunday of every month 11am-4 pm (except Jan, Jul, Aug)  
Subway: **6 J M Z N Q R** | Bus: M1, M6
- 19. ASIA SOCIETY**  
725 Park Avenue at 70th Street | www.asiasociety.org | (212) 288-6400  
Hours: Tues-Sun 11am-6pm, Fri 11am-9pm.  
Subway: **F 6** | Bus: M1, M2, M3, M4, M101, M102 or M30
- 20. ASIAN AMERICAN ARTS CENTRE**  
111 Norfolk Street | www.artspiral.org | (212) 233-2154  
Hours: Call for an appointment, seasonal hours  
Subway: **F J M Z** | Bus: M9, M14A, M103, B39
- 21. THE CATHEDRAL CHURCH OF ST. JOHN THE DIVINE**  
1047 Amsterdam Avenue | www.stjohndivine.org | (212) 316-7540  
Hours: Mon-Sat 7am-6pm, Sun 7am-7pm.  
Subway: **1** | Bus: M4, M104, M11
- 22. CENTER FOR ARCHITECTURE**  
536 LaGuardia Place | www.aiany.org/centerforarchitecture | (212) 683-0023  
Hours: Mon-Fri 9am-8pm, Sat 11am-5pm.  
Subway: **A B C D E F G** | Bus: M5 or M21
- 23. CENTER FOR JEWISH HISTORY**  
15 West 16th Street | www.cjh.org | (212) 294-8301  
Hours: Mon & Wed 9:30am-7:30pm, Tues & Thurs 9:30am-5pm, Fri 9am-3pm, Sun 11am-5pm.  
Subway: **F L N Q R 1 2 3 4 5 6** | Bus: M1, M2, M5, M6, M7, M14, M23

- 24. CENTRAL PARK ZOO**  
Fifth Avenue at 64th Street | www.central-parkzoo.org | (212) 439-6500  
Hours: Mon-Fri 10am-5pm, Sat-Sun 10am-5:30pm  
Subway: **B N R** | Bus: M1, M2, M2, M4, M30, or Q32
- 25. CHELSEA ART MUSEUM**  
556 West 22nd Street | www.chelseartmuseum.org | (212) 255-0719  
Hours: Tues-Sat 11am-6pm.  
Subway: **C E** | Bus: M11, M23
- 26. CHILDREN'S GALLERIES FOR JEWISH CULTURE**  
515 West 20th Street, Suite 4E | www.cgjc.org | (212) 924-4500  
Hours: Check website for additional hours.  
Sun 2pm-5pm  
Subway: **A C E L 1 2 3** | Bus: M11, M14 or M23
- 27. CHILDREN'S MUSEUM OF MANHATTAN**  
212 West 83rd Street | www.cmom.org | (212) 721-1234  
Hours: Tues-Sun 10am-5pm.  
Subway: **B C 1** | Bus: M7, M10, M11, M79 or M104
- 28. CHILDREN'S MUSEUM OF THE ARTS**  
182 Lafayette Street | www.cmany.org | (212) 274-0986  
Hours: Wed, Fri-Sun 12pm-5pm, Thur 12pm-6pm.  
Subway: **B D F N O R J M 6** | Bus: M1 or M6
- 29. THE CLOISTERS**  
Fort Tryon Park | www.metmuseum.org/cloisters | (212) 923-3700  
Hours: Tues-Sun 9:30am-5:15pm.  
Subway: **A** | Bus: M4
- 30. COOPER-HEWITT, NATIONAL DESIGN MUSEUM**  
Two East 91st Street | www.cooperhewitt.org | (212) 849-8400  
Hours: Mon-Fri 10am-5pm, Sat 10am-6pm, Sun 11am-6pm  
Subway: **4 5 6** | Bus: M1, M2, M3, M4, or M106
- 31. THE DRAWING CENTER**  
35 Wooster Street | www.drawingcenter.org | (212) 219-2166  
Hours: Wed 12pm-6pm, Thurs 12pm-8pm, Fri-Sun 12pm-6pm.  
Subway: **A C E N Q R J M Z 1 6** | Bus: BxM40
- 32. DYCKMAN FARMHOUSE MUSEUM**  
4881 Broadway at 204th Street | www.dyckmanfarmhouse.org | (212) 304-9422  
Hours: Wed-Sat 11am-4pm, Sun 12pm-4pm  
Subway: **A 1** | Bus: Bx7, Bx12, Bx20, BxM1, M100
- 33. EL MUSEO DEL BARRIO**  
1230 Fifth Avenue at 104th Street | www.elmuseo.org | (212) 831-7272  
Hours: Wed-Sun 11am-6pm.  
Subway: **2 3 6** | Bus: M1, M2, M3, or M4
- 34. FDNV FIRE ZONE**  
34 West 51st Street | www.fdnvfirezone.org | (212) 698-4520  
Hours: Mon-Sat 9am-7pm, Sun 11am-5pm.  
Subway: **B D F** | Bus: M5, M6, M7, M27 or M50.
- 35. GRACIE MANSION**  
East End Avenue at 88th Street | (212) 570-4773  
Hours: Tours on Wed 10am, 11am, 1pm, and 2pm. Reservation required.  
Subway: **4 5 6** | Bus M86
- 36. THE HISPANIC SOCIETY OF AMERICA LIBRARY AND MUSEUM**  
Audubon Terrace, Broadway between 155 and 156 Streets | www.hispanicsociety.org | (212) 926-2234  
Hours: Tues-Sat 10am-4:30pm, Sun 1-4pm.  
Subway: **1 C** | Bus: M4 or M5

- 37. THE INTERNATIONAL CENTER OF PHOTOGRAPHY**  
1133 Avenue of the Americas at 43rd Street | www.icp.org | (212) 857-0000  
Hours: Tues-Thurs 10am-6pm, Fri 10am-8pm, Sat-Sun 10am-6pm  
Subway: **A B C D E F N O R S** **1 2 3 7** | Bus: M5, M6, M7
- 38. INTREPID SEA, AIR & SPACE MUSEUM**  
Pier 86, W 46th Street & 12th Avenue | www.intrepidmuseum.org | (212) 245-0072  
Hours: Apr 1-Sep 30: Mon-Fri 10am-5pm, Sat-Sun & holidays 10am-6pm; Oct 1-Mar 31: Tues-Sun 10am-5pm.  
Subway: **A C E N Q S 1 2 3 7** | Bus: M34, M42, M50x
- 39. JAPAN SOCIETY**  
333 East 47th Street | www.japansociety.org | (212) 832-1155  
Hours: During exhibition dates Tues-Fri 11am-6pm, Sat-Sun 11am-5pm  
Subway: **4 5 6 7 S** at Grand Central | Bus: M15, M101 or M102
- 40. THE JEWISH MUSEUM**  
1109 Fifth Avenue | www.jewishmuseum.org | (212) 423-3200  
Hours: Mon-Tues, Fri-Sun 11am-5:45pm; Thurs 11am-8pm  
Subway: **4 5 6** | Bus: M1, M2, M3, M4, M86, M96
- 41. MERCHANT'S HOUSE MUSEUM**  
29 E 4th Street | www.merchantshouse.com | (212) 777-1089  
Hours: Thurs-Mon 12-5pm  
Subway: **B F N R 6** | Bus: M1, M5, M6, M102
- 42. THE METROPOLITAN MUSEUM OF ART**  
1000 Fifth Avenue | www.metmuseum.org | (212) 535-7710  
Hours: Tues-Thurs & Sun 9:30-5:30pm, Fri-Sat 9:30am-9pm.  
Subway: **4 5 6** | Bus: M1, M2, M3 or M4
- 43. THE MORGAN LIBRARY & MUSEUM**  
225 Madison Avenue at 36th Street | www.themorgan.org | (212) 685-0008  
Hours: Tues-Thur 10:30am-5pm, Fri 10:30am-9pm, Sat 10am-6pm, Sun 11am-6pm.  
Subway: **B D F Q 4 5 6** | Bus: M2, M3, M4 or Q32
- 44. MORRIS-JUMEL MANSION**  
65 Jumel Terrace | www.morrisjumel.org | (212) 923-8008  
Hours: Wed-Sun 10am-4pm.  
Subway: **C** | Bus: M2, M3, M18 or M101
- 45. MOUNT VERNON HOTEL MUSEUM AND GARDEN**  
421 East 61st Street | www.mvhm.org | (212) 838-6878  
Hours: Tues-Sun 11am-4pm  
Subway: **F N R 4 5 6** | Bus: M15, M31 or M57
- 46. THE MUSEUM AT THE FASHION INSTITUTE OF TECHNOLOGY**  
Seventh Avenue at 27th Street | www.fitnyc.edu/museum | (212) 217-4558  
Hours: Tues-Fri 12-8pm, Sat 10am-5pm.  
Subway: **A C E F N R W 1** | Bus: M20, M23, M34
- 47. MUSEUM AT ELDRIDGE STREET**  
12 Eldridge Street | www.eldridgestreet.org | (212) 219-0302  
Hours: Sun - Thurs 10am - 5pm: Tours are offered every half-hour.  
Subway: **B F N R 6** | Bus: M9, M15
- 48. MUSEUM OF AMERICAN FINANCE**  
48 Wall Street | www.moaf.org | (212) 908-4110  
Hours: Tues-Sat 10am-4pm.  
Subway: **1 2 3 4 5 J M R** | Bus: M1, M6, M9, or M15

**49. MUSEUM OF ARTS & DESIGN**  
2 Columbus Circle | [www.madmuseum.org](http://www.madmuseum.org) | (212) 299-7777  
Hours: Tues-Sun 11am-6pm, Thurs 11am-9pm  
Subway: **A B C D F N Q R 1**  
Bus: M7, M10, M20, M30, M104

**50. MUSEUM OF BIBLICAL ART**  
1865 Broadway | [www.mobia.org](http://www.mobia.org) | (212) 408-1500  
Hours: Wed, Fri-Sun 12-6pm, Thurs 12-8pm  
Subway: **A B C D 1** | Bus: M7, M11 or M104

**51. MUSEUM OF CHINESE IN AMERICA**  
215 Centre Street | [www.mocanyc.org](http://www.mocanyc.org) | (212) 619-4785  
Hours: Mon & Fri 11am-5pm, Thurs 11am-9pm, Sat-Sun 10am-5pm.  
Subway: **J M Z N Q R 6** | Bus: M9, M15, or M103

**52. MUSEUM OF JEWISH HERITAGE - A LIVING MEMORIAL TO THE HOLOCAUST**  
36 Battery Place | [www.mjhnyc.org](http://www.mjhnyc.org) | (646) 437-4200  
Hours: Sun-Tues & Thurs 10am-5:45pm, Wed 10am-8pm, Fri 10am-5pm (during daylight savings time), 10am-3pm (during Eastern Standard Time).  
Subway: **J M R W Z 1 4 5** | Bus: M1, M6, M9, M15 or M20

**53. MUSEUM OF MODERN ART**  
11 West 53rd Street | [www.moma.org](http://www.moma.org) | (212) 708-9400  
Hours: Mon, Wed-Thurs & Sat-Sun 10:30am-5:30pm, Fri 10:30am-8pm.  
Subway: **E D F** | Bus: M1, M2, M3, M4, M5, or M50

**54. MUSEUM OF THE CITY OF NEW YORK**  
1220 Fifth Avenue at 103rd Street | [www.mcny.org](http://www.mcny.org) | (212) 534-1672  
Hours: Tues-Sun 10am-5pm.  
Subway: **2 3 6** | Bus: M1, M2, M3, M4, M5, M57

**55. NATIONAL ACADEMY MUSEUM**  
1083 Fifth Avenue at 89th Street | [www.nationalacademy.org](http://www.nationalacademy.org) | (212) 369-4880  
Hours: Wed-Thurs 12-5pm, Fri 1-9pm, Sat-Sun 11am-6pm.  
Subway: **4 5 6** | Bus: M1, M2, M3, or M4

**56. NATIONAL JAZZ MUSEUM IN HARLEM**  
104 E 126th Street | [www.jazzmuseuminharlem.org](http://www.jazzmuseuminharlem.org) | (212) 348-8300  
Hours: Mon-Fri 10am-4pm  
Subway: **2 3 4 5 6**

**57. NATIONAL MUSEUM OF THE AMERICAN INDIAN**  
One Bowling Green | [www.nmai.si.edu](http://www.nmai.si.edu) | (212) 514-3700  
Hours: Mon-Wed & Fri-Sun 10am-5pm, Thurs 10am-8pm.  
Subway: **J M R Z 1 4 5** | Bus: M1, M6 M15

**58. NEW YORK CITY FIRE MUSEUM**  
278 Spring Street | [www.nycfiremuseum.org](http://www.nycfiremuseum.org) | (212) 691-1303  
Hours: Tues-Sat 10am-5pm, Sun 10am-4pm.  
Subway: **C E 1** | Bus: M10 or M21

**59. THE NEW YORK CITY POLICE MUSEUM**  
100 Old Slip | [www.nycpolicemuseum.org](http://www.nycpolicemuseum.org) | (212) 480-3100  
Hours: Mon-Sat 10am-5pm.  
Subway: **R 1 2 3 4 5** | Bus: M9 or M15

**60. NEW YORK HISTORICAL SOCIETY**  
170 Central Park West | [www.nyhistory.org](http://www.nyhistory.org) | (212) 873-3400  
Hours: Tues-Thurs, Sat 10am-6pm, Fri 10am-8pm, Sun 11am-5:45pm  
Subway: **B C** | Bus: M10 or M79

**61. THE PALEY CENTER FOR MEDIA**  
25 West 52nd Street | [www.paleycenter.org](http://www.paleycenter.org) | (212) 621-6800  
Hours: Tues-Wed, Fri-Sun 12pm-6pm, Thurs 12pm-8pm  
Subway: **B D E F N R 1** | Bus: Southbound on Fifth Avenue, Broadway, and Seventh Avenue; northbound on Madison Avenue and Sixth Avenue

**62. RUBIN MUSEUM OF ART**  
150 West 17th Street | [www.rmanyc.org](http://www.rmanyc.org) | (212) 620-5000  
Hours: Mon & Thurs 11am-5pm, Wed 11am-7pm, Fri 11am-10pm & Sat-Sun 11am-6pm.  
Subway: **A C E F L N Q R 1 2 3 4 5 6** | Bus: M5, M6, M7, M20

**63. SCHOMBURG CENTER FOR RESEARCH IN BLACK CULTURE**  
515 Malcolm X Boulevard | [www.nypl.org/research/sc](http://www.nypl.org/research/sc) | (212) 491-2200  
Hours: Mon-Wed 12-8pm, Thurs-Fri 11am-6pm, Sat 10am-5pm, and by appointment.  
Subway: **2 3** | Bus: M7 or M102

**64. THE SKYSCRAPER MUSEUM**  
39 Battery Place | [www.skyscraper.org](http://www.skyscraper.org) | (212) 968-1961  
Hours: Wed-Sun 12-6pm.  
Subway: **J M R Z 1 4 5**  
Bus: M1, M6, M9, M15 or M20

**65. SOLOMON R. GUGGENHEIM MUSEUM**  
1071 Fifth Avenue | [www.guggenheim.org](http://www.guggenheim.org) | (212) 423-3500  
Hours: Sun-Wed, Fri 10am-5:45pm, Sat 10am-7:45pm.  
Subway: **4 5 6** | Bus: M1, M2, M3 or M4

**66. SONY WONDER TECHNOLOGY LAB**  
56th St & Madison Avenue | [www.sonywondertechlab.com](http://www.sonywondertechlab.com) | (212) 833-8100  
Hours: Tues-Sat 10am-5pm, Sun 12-5pm.  
Subway: **N R 4 5 6** | Bus: M1, M2, M3, M4, M5, M57

**67. SOUTH STREET SEAPORT MUSEUM**  
12 Fulton Street | [www.seany.org](http://www.seany.org) | (212) 748-8786  
Hours: Apr-Dec: Tues-Sun 10am-6pm  
Subway: **A C J M Z 2 3 4 5** | Bus: M15

**68. THE STUDIO MUSEUM IN HARLEM**  
144 West 125th Street | [www.studiomuseum.org](http://www.studiomuseum.org) | (212) 864-4500  
Hours: Thurs & Fri 12-9pm Sun 12-6pm, Sat 10am-6pm  
Subway: **A B C D 2 3 4 5 6**  
Bus: M2, M7, M10, M100, M101, M102 or BX15

**69. WHITNEY MUSEUM OF AMERICAN ART**  
945 Madison Avenue at 75th Street | [www.whitney.org](http://www.whitney.org) | (212) 570-3600  
Hours: Wed-Thurs, Sat-Sun 11am-6pm, Fri 1-9pm.  
Subway: **6** | Bus: M1, M2, M3, or M4

**70. YESHIVA UNIVERSITY MUSEUM**  
15 West 16th Street | [www.yumuseum.org](http://www.yumuseum.org) | (212) 294-8330  
Hours: Sun, Tues-Thurs 11am-5pm, Mon 3:30-8pm, Fri 11am-2:30pm.  
Subway: **F M N Q R 1 2 3 4 5 6** | Bus: M2, M3, M5 or M7

#### QUEENS

**71. FLUSHING COUNCIL ON CULTURE & ARTS**  
Flushing Town Hall, 137-35 Northern Blvd | [www.flushingtownhall.org](http://www.flushingtownhall.org) | (718) 463-7700  
Hours: Thurs-Sun 12-5pm.  
Subway: **7** | Bus: Q1, Q13, Q25, Q34, Q28, Q44, Q65, Q66

#### JAMAICA CENTER FOR ARTS & LEARNING

161-04 Jamaica Avenue | [www.jcal.org](http://www.jcal.org) | (718) 658-7400  
Hours: Mon-Thurs 8:30am-6pm  
Subway: **E F J** | Bus: Q1, Q2, Q3, Q4, Q5, Q6, Q8 Q9, Q9A, Q21, Q24, Q31, Q34, Q36, Q41, Q42, Q43, Q44, Q54, Q56, Q65, Q83, Q84, Q85, Q110, Q112, Q113

**73. KING MANOR MUSEUM**  
150-03 Jamaica Avenue | [www.kingmanor.org](http://www.kingmanor.org) | (718) 206-0545  
Hours: Guided tours every half-hour, Feb-Dec: Thurs-Fri 12-2pm (last tour 1:30pm), Sat-Sun 1-5pm (last tour 4:30pm).  
Subway: **E J Z** | Bus: Q24, Q42, Q43, Q44, Q54, Q56 or Q83

**74. THE LOUIS ARMSTRONG HOUSE**  
34-56 107th Street | [www.louisarmstrong-house.org](http://www.louisarmstrong-house.org) | (718) 478-8274  
Hours: Tues-Fri 10am-5pm, Sat-Sun 12pm-5pm.  
Subway: **7** | Bus: Q48

**75. MUSEUM OF THE MOVING IMAGE**  
35th Avenue at 36th Street | [www.movingimage.us](http://www.movingimage.us) | (718) 784-0077  
Hours: CLOSED UNTIL 2011  
Subway: **E G N R** | Bus: Q66 or Q101

**76. NEW YORK HALL OF SCIENCE**  
47-01 111th Street, Flushing Meadows-Corona Park | [www.nysci.org](http://www.nysci.org) | (718) 699-0005  
Hours: Tues-Thurs 9:30am-2pm, Fri 9:30am-5pm, Sat-Sun 10am-6pm.  
Subway: **7** | Bus: Q23 or Q48

**77. NOGUCHI MUSEUM**  
9-01 33rd Road | [www.noguchi.org](http://www.noguchi.org) | (718) 204-7088  
Hours: Wed-Fri 10am-5pm, Sat-Sun 11am-6pm.  
Subway: **N Q F** | Bus: Q103

**78. P.S. 1 CONTEMPORARY ART CENTER**  
22-25 Jackson Avenue at 46th Avenue | [www.ps1.org](http://www.ps1.org) | (718) 784-2084  
Hours: Thursday - Monday: 12-6pm.  
Subway: **E G 7** | Bus: B61, or Q67

**79. QUEENS BOTANICAL GARDEN**  
43-50 Main Street, in park | [www.queensbotanical.org](http://www.queensbotanical.org) | (718) 886-3800  
Hours: Tues-Sun 8am-6pm  
Subway: **7** | Bus: Q20, or Q41

**80. QUEENS HISTORICAL SOCIETY AT KINGSLAND HOMESTEAD**  
143-35 37th Avenue | [www.queenshistorical-society.org](http://www.queenshistorical-society.org) | (718) 939-0647  
Hours: Tues, Sat-Sun 2:30-4:30pm.  
Subway: **7** | Bus: Q12, Q13, Q14, Q15, Q17, Q26, Q27, Q28, Q44, Q48, Q65 or Q66

**81. QUEENS MUSEUM OF ART**  
New York City Building, Flushing Meadows-Corona Park | [www.queensmuseum.org](http://www.queensmuseum.org) | (718) 592-9700  
Hours: Wed-Sun 12-6pm.  
Subway: **7** | Bus: Q23, Q48 or Q58

**82. QUEENS ZOO**  
53-51 111th Street, in park | [www.queenszoo.org](http://www.queenszoo.org) | (718) 271-1500  
Hours: Mon-Fri 10am-5pm, Sat-Sun 10am-5:30pm  
Subway: **7** | Bus: Q58

**83. SOCRATES SCULPTURE PARK**  
Broadway at Vernon Boulevard | [www.socratesculpturepark.org](http://www.socratesculpturepark.org) | (718) 956-1819  
Hours: Daily 10am to sunset  
Subway: **N** | Bus: Q19A, Q103 or Q104

#### STATEN ISLAND

**84. ALICE AUSTEN HOUSE MUSEUM**  
2 Hylan Boulevard | [www.aliceausten.org](http://www.aliceausten.org) | (718) 816-4506  
Hours: Thurs-Sun 12-5pm.  
Bus: S51

**85. HISTORIC RICHMOND TOWN**  
441 Clarke Avenue | [www.historicrichmond-town.org](http://www.historicrichmond-town.org) | (718) 351-1611  
Hours: Wed-Sun, please visit website or call for hours  
Bus: S74

**86. THE JACQUES MARCHAIS MUSEUM OF TIBETAN ART**  
338 Lighthouse Avenue | [www.tibetanmuseum.org](http://www.tibetanmuseum.org) | (718) 987-3500  
Hours: Wed-Sun 1-5pm.  
Bus: S74

**87. SNUG HARBOR CULTURAL CENTER & BOTANICAL GARDEN**  
1000 Richmond Terrace | [www.snug-harbor.org](http://www.snug-harbor.org) | (718) 273-8200  
Hours: Daily, dawn to dusk.  
Bus: S40

**88. STATEN ISLAND CHILDREN'S MUSEUM**  
1000 Richmond Terrace | [www.statenisland-kids.org](http://www.statenisland-kids.org) | (718) 273-2060  
Hours: 12-5pm school days (except Mondays, closed); 10am-5pm when public schools are closed (including weekends).  
Bus: S40

**89. STATEN ISLAND MUSEUM**  
75 Stuyvesant Place | [www.statenislandmuseum.org](http://www.statenislandmuseum.org) | (718) 727-1135  
Hours: Mon-Fri & Sun 12-5pm, Sat 10am-5pm.  
SI Railway, SI Ferry | Bus: S40, S42, S44, S46, S48, S51, S52, S61, S62, S66, S67, S74, S76, S78, S90, S91, S92, S94, S96 or S98

**90. STATEN ISLAND ZOO**  
614 Broadway | [www.statenislandzoo.org](http://www.statenislandzoo.org) | (718) 442-3100  
Hours: Daily 10am-4:45pm  
Bus: S48 or S53

#### THANKS TO OUR SUPPORTERS

Support for Cool Culture is provided by the following: Altman Foundation, American Corporate Benefits, Inc., Bloomberg LP, Brooklyn Community Foundation, Carnegie Corporation of New York, Con Edison, EmblemHealth, FILCO, Glamour Magazine for Dinner with Bevy, Granet Foundation, HUGO BOSS, Hyde and Watson Foundation, Keith Haring Foundation, Limited Brands, Louis & Anne Abrons Foundation, Maclaren, Macy's East, Mary Duke Biddle Foundation, New York City Council, New York City Children's Services, New York City Department of Cultural Affairs, New York Community Trust, New York Times Company Foundation, The National Endowment for the Arts, The Peninsula Foundation, PriceWaterhouseCoopers LLP, The Shelley & Donald Rubin Foundation, Seiter & Miller Advertising, Target, Troutman Sanders LLP, Ward & Olivo, Y INTERACT

# COOL CULTURE PARTNERS MAP

**MTA** Metropolitan Transportation Authority  
**MTA New York City Subway**  
with bus and railroad connections

Subway Map © Metropolitan Transportation Authority.  
Used with permission. Map current as of July 2010.  
For the most current map, go to [www.mta.info](http://www.mta.info)



[www.coolculture.org](http://www.coolculture.org)

COOL CULTURE FAMILY TIME / FALL 2010